

Recombinant Human SERGEF Protein, Myc/DDK-tagged, C13 and N15-labeled

Cat. No. SERGEF-5265H **Lot. No.** (See product label)

SPECIFICATION

Product Overview	SERGEF MS Standard C13 and N15-labeled recombinant protein (NP_036271) with a C-terminal MYC/DDK tag, was expressed in HEK293 cells.
Species	Human
Source	HEK293
Description	Probable guanine nucleotide exchange factor (GEF), which may be involved in the secretion process.
Molecular Mass	49 kDa
AA Sequence	<p>MEREPSASEAAPAAAALFAWGANSYGQLGLGHKEDVLLPQQLNDFCKPRSVRRITG GGGHSVVTDGGDLFVCGLNKDGQLGLGHTEIPYFTPCPSLFGCPIQQVACGWD FTIMLTENGQVLSCGSNSFGQLGVPHGPRRCVVPQAIELHKEKVVCIAAGLRHAVAA TASGIVFQWGTGLASCGRRLCPGQTLPLFFTAKEPSRVTGLENSKAMCVLAGSDHS ASLTDAGEVYVWGSNKHGQLANEAAFLPVPQKIEAHCQNEKVTAIWSGWTHLVAQ TETGKMFTWGRADYGQLGRKLETYEGWKLEKQDSFLPCSRPPNSMPSSPHCLTGA TEVSCGSEHNLAIIIGVCYSWGWNEHGMCGDGTEANVWAPKPVQALLSSSGLLVG CGAGHSLALCQLPAHPALVQDPKVTYLSFDAIEDTESQKAMDKERNWKERQSETST QSQSDWSRNGGLTRTRPLEQKLISEEDLAANDILDYKDDDDKV</p>
Purity	> 80% as determined by SDS-PAGE and Coomassie blue staining

 Tel: 1-631-559-9269 1-516-512-3133

 Email: info@creative-biomart.com  Fax: 1-631-938-8127

 45-1 Ramsey Road, Shirley, NY 11967, USA

Stability	Stable for 3 months from receipt of products under proper storage and handling conditions.
Storage	Store at -80 centigrade. Avoid repeated freeze-thaw cycles.
Concentration	50 µg/mL as determined by BCA
Storage Buffer	100 mM glycine, 25 mM Tris-HCl, pH 7.3.

GENE INFORMATION

Gene Name	SERGEF secretion regulating guanine nucleotide exchange factor [Homo sapiens (human)]
Official Symbol	SERGEF
Synonyms	SERGEF; secretion regulating guanine nucleotide exchange factor; secretion-regulating guanine nucleotide exchange factor; DelGEF; Gnefr; guanine nucleotide exchange factor-related protein; deafness locus associated putative guanine nucleotide exchange factor; deafness locus-associated putative guanine nucleotide exchange factor; DELGEF;
Gene ID	26297
mRNA Refseq	NM_012139
Protein Refseq	NP_036271
MIM	606051
UniProt ID	Q9UGK8

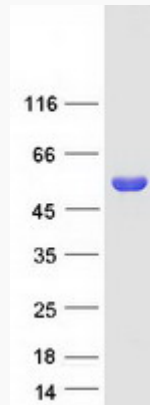
 Tel: 1-631-559-9269 1-516-512-3133

 Email: info@creative-biomart.com  Fax: 1-631-938-8127

 45-1 Ramsey Road, Shirley, NY 11967, USA



SDS-PAGE



Tel: 1-631-559-9269 1-516-512-3133

Email: info@creative-biomart.com Fax: 1-631-938-8127

45-1 Ramsey Road, Shirley, NY 11967, USA