

# Recombinant Human SERPINA1

Cat. No. SERPINA1-0110 Lot. No. (See product label)

## SPECIFICATION

<b>Product Overview</b>	Recombinant Human SERPINA1 was expressed in Oryza Sativa (Rice Grain) and purified by using HPLC-SEC techniques.
<b>Species</b>	Human
<b>Source</b>	Oryza Sativa
<b>Description</b>	Human Alpha 1?Antitrypsin (AAT) is a glycoprotein having a molecular weight of 53,000 determined by sedimentation equilibrium centrifugation. The glycoprotein consists of a single polypeptide chain to which several oligosaccheride units are covalently bonded. AAT has a role in controlling tissue destruction by endogenous serine proteinases.
<b>Form</b>	Lyophilized Powder
<b>Purity</b>	Greater than 90% as determined by HPLC-SEC.
<b>Usage</b>	For Research, Laboratory and Manufacture Use. The product should not be used as drugs and food additives.
<b>Unitprot ID</b>	P01009

## GENE INFORMATION

<b>Gene Name</b>	SERPINA1 serpin peptidase inhibitor, clade A (alpha-1 antiproteinase, antitrypsin),
------------------	---

 Tel: 1-631-559-9269 1-516-512-3133

 Email: [info@creative-biomart.com](mailto:info@creative-biomart.com)  Fax: 1-631-938-8127

 45-1 Ramsey Road, Shirley, NY 11967, USA

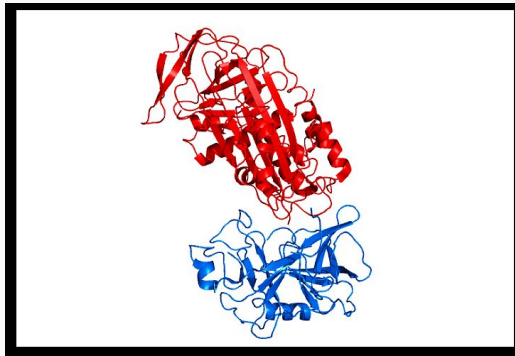
	member 1 [ Homo sapiens ]
<b>Official Symbol</b>	SERPINA1
<b>Synonyms</b>	SERPINA1; serpin peptidase inhibitor, clade A (alpha-1 antiproteinase, antitrypsin), member 1; PI; A1A; AAT; PI1; A1AT; MGC9222; PRO2275; MGC23330; serine proteinase inhibitor, clade A, member 1; OTTHUMP00000197150; protease inhibitor 1 (anti-elastase), alpha-1-antitrypsin serine (or cysteine) proteinase inhibitor, clade A, member 1
<b>Gene ID</b>	5265
<b>mRNA Refseq</b>	NM_000295
<b>Protein Refseq</b>	NP_000286
<b>MIM</b>	107400
<b>Chromosome Location</b>	14q32.1
<b>Pathway</b>	Complement and Coagulation Cascades; FOXA1 transcription factor network; Formation of Platelet plug; Hemostasis; Platelet Activation; Platelet degranulation; Response to elevated platelet cytosolic Ca <sup>2+</sup>
<b>Function</b>	protease binding; serine-type endopeptidase inhibitor activity

 Tel: 1-631-559-9269 1-516-512-3133

 Email: [info@creative-biomart.com](mailto:info@creative-biomart.com)  Fax: 1-631-938-8127

 45-1 Ramsey Road, Shirley, NY 11967, USA

**Crystal structure  
of serpin A1 (red) in  
an inhibitory  
complex with  
pancreatic elastase  
(blue). Rendered from  
PDB 2D26.**



 Tel: 1-631-559-9269 1-516-512-3133

 Email: [info@creative-biomart.com](mailto:info@creative-biomart.com)  Fax: 1-631-938-8127

 45-1 Ramsey Road, Shirley, NY 11967, USA