

# Recombinant Human SERPINA1 Protein (Glu25-Lys418), N-His-tagged

Cat. No. SERPINA1-0609H Lot. No. (See product label)

## SPECIFICATION

<b>Product Overview</b>	Recombinant human a1AT/Serpin A1/SERPINA1 (Glu25-Lys418) was fused with the N-His tag and was expressed in E. coli.
<b>Species</b>	Human
<b>Source</b>	E.coli
<b>ProteinLength</b>	Glu25-Lys418
<b>Form</b>	Lyophilized powder/frozen liquid
<b>Molecular Mass</b>	46.63 kDa
<b>Purity</b>	>90% as determined by SDS-PAGE
<b>Notes</b>	For research use only.
<b>Storage</b>	Use a manual defrost freezer and avoid repeated freeze thaw cycles. Store at 2 to 8 centigrade for one week. Store at -20 to -80 centigrade for twelve months from the date of receipt.
<b>Storage Buffer</b>	0.01M PBS, pH 7.4, 0.02% NLS
<b>Reconstitution</b>	Reconstitute in sterile water for a stock solution.

 Tel: 1-631-559-9269 1-516-512-3133

 Email: [info@creative-biomart.com](mailto:info@creative-biomart.com)  Fax: 1-631-938-8127

 45-1 Ramsey Road, Shirley, NY 11967, USA

**Shipping** They are shipped out with dry ice/blue ice unless customers require otherwise.

## GENE INFORMATION

**Gene Name** SERPINA1 serpin peptidase inhibitor, clade A (alpha-1 antiproteinase, antitrypsin), member 1 [ Homo sapiens (human) ]

**Official Symbol** SERPINA1

**Synonyms** SERPINA1; serpin peptidase inhibitor, clade A (alpha-1 antiproteinase, antitrypsin), member 1; PI, serine (or cysteine) proteinase inhibitor, clade A (alpha 1 antiproteinase, antitrypsin), member 1; alpha-1-antitrypsin; A1A; A1AT; AAT; alpha 1 antitrypsin; alpha1AT; PI1; protease inhibitor 1 (anti elastase); serpin A1; alpha-1-antiproteinase; alpha-1-antitrypsin null; alpha-1 protease inhibitor; protease inhibitor 1 (anti-elastase), alpha-1-antitrypsin; serine (or cysteine) proteinase inhibitor, clade A, member 1; PI; PRO2275; MGC9222; MGC23330;

**Gene ID** 5265

**mRNA Refseq** NM\_000295

**Protein Refseq** NP\_000286

**MIM** 107400

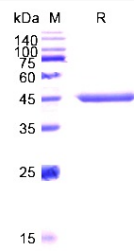
**UniProt ID** P01009

 Tel: 1-631-559-9269 1-516-512-3133

 Email: [info@creative-biomart.com](mailto:info@creative-biomart.com)  Fax: 1-631-938-8127

 45-1 Ramsey Road, Shirley, NY 11967, USA

**SDS-PAGE**



 Tel: 1-631-559-9269 1-516-512-3133

 Email: [info@creative-biomart.com](mailto:info@creative-biomart.com)  Fax: 1-631-938-8127

 45-1 Ramsey Road, Shirley, NY 11967, USA