

Recombinant Rat SERPINA1 Protein (25-411 aa), His-tagged

Cat. No. SERPINA1-1514R Lot. No. (See product label)

SPECIFICATION

| | |
|-------------------------|--|
| Product Overview | Recombinant Rat SERPINA1 Protein (25-411 aa) is produced by Yeast expression system. This protein is fused with a 6xHis tag at the N-terminal. Research Area: Immunology. Protein Description: Full Length of Mature Protein. |
| Species | Rat |
| Source | Yeast |
| ProteinLength | 25-411 aa |
| Description | Inhibitor of serine proteases. Its primary target is elastase, but it also has a moderate affinity for plasmin and thrombin. Irreversibly inhibits trypsin, chymotrypsin and plasminogen activator. The aberrant form inhibits insulin-induced NO synthesis in platelets, decreases coagulation time and has proteolytic activity against insulin and plasmin. Short peptide from AAT: reversible chymotrypsin inhibitor. It also inhibits elastase, but not trypsin. Its major physiological function is the protection of the lower respiratory tract against proteolytic destruction by human leukocyte elastase (HLE). |
| Form | Tris-based buffer, 50% glycerol |
| Molecular Mass | 45.7 kDa |
| AA Sequence | EDAQETDTSQQDQSPTYRKISSNLADFAFSLYRELVHQSNTSNIFFSPMSITTAFAFAML SLGSKGDTRKQILEGLEFNLTQIPEADHKAFFHLLQTLNRPDSELQLNTGNGLFVNK NLKLVEKFLEEVKNNYHSEAFSVNFADSEEAKKVIN DYVEKGTQGGKIVDLMKQLDED |

 Tel: 1-631-559-9269 1-516-512-3133

 Email: info@creative-biomart.com  Fax: 1-631-938-8127

 45-1 Ramsey Road, Shirley, NY 11967, USA

TVFALVNYIFFKGGKWKRPFNPEHTRDADFHVDKSTTVKVPMMNRLGMFDMHYCSTL
 SSWVLMMDYLGNATAIFLLPDDGKMQHLEQTLTKDLISRFLNLRQTRSAILYFPKLSI
 SGTYNLKTLLSSLGITRVFNNDADLSGITEDAPLKLSQAVHKAVLTLDERGTEAAGAT
 VVEAVPMSLPPQVKFDHPFIFMIVESETQSPLFVGKVIDPTR

Purity > 90% as determined by SDS-PAGE.

Notes Repeated freezing and thawing is not recommended. Store working aliquots at 4 centigrade for up to one week.

Storage The shelf life is related to many factors, storage state, buffer ingredients, storage temperature and the stability of the protein itself. Generally, the shelf life of liquid form is 6 months at -20 centigrade/-80 centigrade. The shelf life of lyophilized form is 12 months at -20 centigrade/-80 centigrade.

Concentration A hardcopy of COA with reconstitution instruction is sent along with the products.

GENE INFORMATION

Gene Name *Serpina1* serine (or cysteine) proteinase inhibitor, clade A (alpha-1 antiproteinase, antitrypsin), member 1 [*Rattus norvegicus*]

Official Symbol **SERPINA1**

Synonyms SERPINA1; serine (or cysteine) proteinase inhibitor, clade A (alpha-1 antiproteinase, antitrypsin), member 1;

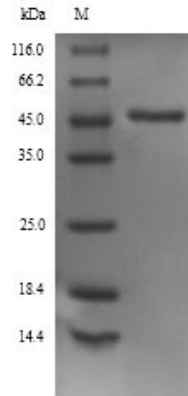
Gene ID 116807

UniProt ID P17475

 Tel: 1-631-559-9269 1-516-512-3133

 Email: info@creative-biomart.com  Fax: 1-631-938-8127

 45-1 Ramsey Road, Shirley, NY 11967, USA



(Tris-Glycine gel) Discontinuous SDS-PAGE (reduced) with 5% enrichment gel and 15% separation gel.

 Tel: 1-631-559-9269 1-516-512-3133

 Email: info@creative-biomart.com  Fax: 1-631-938-8127

 45-1 Ramsey Road, Shirley, NY 11967, USA