

Recombinant Human SERPINA1 Protein, Myc/DDK-tagged, C13 and N15-labeled

Cat. No. SERPINA1-2940H **Lot. No.** (See product label)

SPECIFICATION

Product Overview

SERPINA1 MS Standard C13 and N15-labeled recombinant protein (NP_001121173) with a C-terminal MYC/DDK tag, was expressed in HEK293 cells.

Species

Human

Source

HEK293

Description

The protein encoded by this gene is secreted and is a serine protease inhibitor whose targets include elastase, plasmin, thrombin, trypsin, chymotrypsin, and plasminogen activator. Defects in this gene can cause emphysema or liver disease. Several transcript variants encoding the same protein have been found for this gene.

Molecular Mass

46.7 kDa

AA Sequence

MPSSVSWGILLLAGLCCLVPVSLAEDPQGDAAQKTDTSHHQDHPFNKITPNLAEF
 AFSLYRQLAHQSNSTNIFFSPVSIATAFAMLSLGTKADTHDEILEGLNFNLTEIPEAQIH
 EGFQELLRTLNPDSQLQLTTGNGLFLSEGLKLVDFLEDVKKLYHSEFTVNFVGD
 EEAKKQINDYVEKGTQGGKIVDLVKELDRDVFALVNYIFFKGGWERPFVVKDTEED
 FHVDQVTTVKVPMKRLGMFNIQHCKKLSSWVLLMKYLGNATAIFFLPDEGKLQHL
 ENELTHDIITKFLNEDRRSASLHLPKLSITGTYDLKSVLGGQLGITKVFNSGADLSGVT
 EEAPLKLSKAVHKAVLTIDEKGTEAAGAMFLEAIPMSIPPEVKFNKPFVFLMIDQNTKS
 PLFMGKVVNPTQKTRTRPLEQKLISEEDLAANDILDYKDDDDKV

Purity

> 80% as determined by SDS-PAGE and Coomassie blue staining

 Tel: 1-631-559-9269 1-516-512-3133

 Email: info@creative-biomart.com  Fax: 1-631-938-8127

 45-1 Ramsey Road, Shirley, NY 11967, USA

Stability	Stable for 3 months from receipt of products under proper storage and handling conditions.
Storage	Store at -80 centigrade. Avoid repeated freeze-thaw cycles.
Concentration	50 µg/mL as determined by BCA
Storage Buffer	100 mM glycine, 25 mM Tris-HCl, pH 7.3.
GENE INFORMATION	
Gene Name	SERPINA1 serpin family A member 1 [Homo sapiens (human)]
Official Symbol	SERPINA1
Synonyms	SERPINA1; serpin peptidase inhibitor, clade A (alpha-1 antiproteinase, antitrypsin), member 1; PI, serine (or cysteine) proteinase inhibitor, clade A (alpha 1 antiproteinase, antitrypsin), member 1; alpha-1-antitrypsin; A1A; A1AT; AAT; alpha 1 antitrypsin; alpha1AT; PI1; protease inhibitor 1 (anti elastase); serpin A1; alpha-1-antiproteinase; alpha-1-antitrypsin null; alpha-1 protease inhibitor; protease inhibitor 1 (anti-elastase), alpha-1-antitrypsin; serine (or cysteine) proteinase inhibitor, clade A, member 1; PI; PRO2275; MGC9222; MGC23330;
Gene ID	5265
mRNA Refseq	NM_001127701
Protein Refseq	NP_001121173
MIM	107400

 Tel: 1-631-559-9269 1-516-512-3133

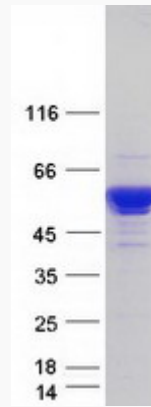
 Email: info@creative-biomart.com  Fax: 1-631-938-8127

 45-1 Ramsey Road, Shirley, NY 11967, USA

UniProt ID

P01009

SDS-PAGE



 Tel: 1-631-559-9269 1-516-512-3133

 Email: info@creative-biomart.com  Fax: 1-631-938-8127

 45-1 Ramsey Road, Shirley, NY 11967, USA