

# Recombinant Human SERPINA1 Protein, Myc/DDK-tagged, C13 and N15-labeled

**Cat. No.** SERPINA1-4398H    **Lot. No.** (See product label)

## SPECIFICATION

### Product Overview

SERPINA1 MS Standard C13 and N15-labeled recombinant protein (NP\_001121179) with a C-terminal MYC/DDK tag, was expressed in HEK293 cells.

### Species

Human

### Source

HEK293

### Description

The protein encoded by this gene is secreted and is a serine protease inhibitor whose targets include elastase, plasmin, thrombin, trypsin, chymotrypsin, and plasminogen activator. Defects in this gene can cause emphysema or liver disease. Several transcript variants encoding the same protein have been found for this gene.

### Molecular Mass

46.7 kDa

### AA Sequence

MPSSVSWGILLLAGLCCLVPVSLAEDPQGDAAQKTDTSHHQDHPFNKITPNLAEF  
 AFSLYRQLAHQSNSTNIFFSPVSIATAFAMLSLGTKADTHDEILEGLNFNLTEIPEAQIH  
 EGFQELLRTLNPDSQLQLTTGNGLFLSEGLKLVDFLEDVKKLYHSEFTVNFVGD  
 EEAKKQINDYVEKGTQGGKIVDLVKELDRDVFALVNYIFFKGGWERPFVVKDTEED  
 FHVDQVTTVKVPMKRLGMFNIQHCKKLSSWVLLMKYLGNATAIFFLPDEGKLQHL  
 ENELTHDIITKFLNEDRRSASLHLPKLSITGTYDLKSVLGGQLGITKVFNSGADLSGVT  
 EEAPLKLSKAVHKAVLTIDEKGTEAAGAMFLEAIPMSIPPEVKFNKPFVFLMIDQNTKS  
 PLFMGKVVNPTQKTRTRPLEQKLISEEDLAANDILDYKDDDDKV

### Purity

> 80% as determined by SDS-PAGE and Coomassie blue staining

 Tel: 1-631-559-9269    1-516-512-3133

 Email: [info@creative-biomart.com](mailto:info@creative-biomart.com)     Fax: 1-631-938-8127

 45-1 Ramsey Road, Shirley, NY 11967, USA

|                         |   |
|-------------------------|---|
| <b>Stability</b>        | Stable for 3 months from receipt of products under proper storage and handling conditions.  |
| <b>Storage</b>          | Store at -80 centigrade. Avoid repeated freeze-thaw cycles.   |
| <b>Concentration</b>    | 50 µg/mL as determined by BCA   |
| <b>Storage Buffer</b>   | 100 mM glycine, 25 mM Tris-HCl, pH 7.3.   |
| <b>GENE INFORMATION</b> |   |
| <b>Gene Name</b>        | <a href="#">SERPINA1 serpin family A member 1 [ Homo sapiens (human) ]</a>  |
| <b>Official Symbol</b>  | <a href="#">SERPINA1</a>  |
| <b>Synonyms</b>         | SERPINA1; serpin peptidase inhibitor, clade A (alpha-1 antiproteinase, antitrypsin), member 1; PI, serine (or cysteine) proteinase inhibitor, clade A (alpha 1 antiproteinase, antitrypsin), member 1; alpha-1-antitrypsin; A1A; A1AT; AAT; alpha 1 antitrypsin; alpha1AT; PI1; protease inhibitor 1 (anti elastase); serpin A1; alpha-1-antiproteinase; alpha-1-antitrypsin null; alpha-1 protease inhibitor; protease inhibitor 1 (anti-elastase), alpha-1-antitrypsin; serine (or cysteine) proteinase inhibitor, clade A, member 1; PI; PRO2275; MGC9222; MGC23330; |
| <b>Gene ID</b>          | <a href="#">5265</a>  |
| <b>mRNA Refseq</b>      | <a href="#">NM_001127707</a>  |
| <b>Protein Refseq</b>   | <a href="#">NP_001121179</a>  |
| <b>MIM</b>              | <a href="#">107400</a>  |

 Tel: 1-631-559-9269 1-516-512-3133

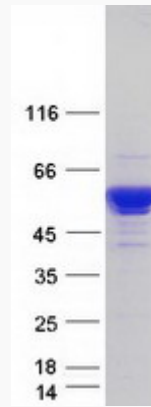
 Email: [info@creative-biomart.com](mailto:info@creative-biomart.com)  Fax: 1-631-938-8127

 45-1 Ramsey Road, Shirley, NY 11967, USA

UniProt ID

P01009

SDS-PAGE



 Tel: 1-631-559-9269 1-516-512-3133

 Email: [info@creative-biomart.com](mailto:info@creative-biomart.com)  Fax: 1-631-938-8127

 45-1 Ramsey Road, Shirley, NY 11967, USA