

Recombinant Human SERPINA1 Protein (AA 25-418), N-His-Tagged

Cat. No. SERPINA1-71H **Lot. No.** (See product label)

SPECIFICATION

Product Overview	Recombinant Human SERPINA1 Protein (AA 25-418) with N-His tag was expressed in HEK293.
Species	Human
Source	HEK293
ProteinLength	AA 25-418
Description	The protein encoded by this gene is a serine protease inhibitor belonging to the serpin superfamily whose targets include elastase, plasmin, thrombin, trypsin, chymotrypsin, and plasminogen activator. This protein is produced in the liver, the bone marrow, by lymphocytic and monocytic cells in lymphoid tissue, and by the Paneth cells of the gut. Defects in this gene are associated with chronic obstructive pulmonary disease, emphysema, and chronic liver disease. Several transcript variants encoding the same protein have been found for this gene.
Form	Liquid
AA Sequence	EDPQGDAAQKTDTSHHDDHPTFNKITPNLAEFASFSLYRQLAHQSNSTNIFFSPVSI ATAFAMLSLGTKADTHDEILEGLNFNLTEIPEAQIHEGFQELLRTL NQPDSQLQLTTG NGLFLSEGLKLVDFLEDVKKLYHSEFTVNFVGDTEEAQKQINDYVEKGTQGGKIVDLV KELDRDRTVFALVNYIFFKKGWERPFVVKDTEEEDFHVDQVTTVKVPMMKRLGMFNI QHCKKLSSWVLLMKYLG NATAIFFLPDEGKLQHLENELTHDIITKFL ENEDRRSASLH

 Tel: 1-631-559-9269 1-516-512-3133

 Email: info@creative-biomart.com  Fax: 1-631-938-8127

 45-1 Ramsey Road, Shirley, NY 11967, USA

LPKLSITGTYDLKSVLGQLGITKVFSNGADLSGVTEEAPLKLSKAVHKAVLTIDEKGTE
AAGAMFLEAIPMSIPPEVKFNKPFVFLMIEQNTKSPLFMGKVVNPTQK

Purity > 95% as determined by SDS-PAGE

Storage Stored and shipped at -80 centigrade

Storage Buffer 10 mM Tris, 200 mM NaCl, 1 mM EDTA, 1 mM β-Mercaptoethanol; pH 8.0

GENE INFORMATION

Gene Name SERPINA1 serpin peptidase inhibitor, clade A (alpha-1 antiproteinase, antitrypsin), member 1 [Homo sapiens]

Official Symbol SERPINA1

Synonyms SERPINA1; serpin peptidase inhibitor, clade A (alpha-1 antiproteinase, antitrypsin), member 1; PI, serine (or cysteine) proteinase inhibitor, clade A (alpha 1 antiproteinase, antitrypsin), member 1; alpha-1-antitrypsin; A1A; A1AT; AAT; alpha 1 antitrypsin; alpha1AT; PI1; protease inhibitor 1 (anti elastase); serpin A1; alpha-1-antiproteinase; alpha-1-antitrypsin null; alpha-1 protease inhibitor; protease inhibitor 1 (anti-elastase), alpha-1-antitrypsin; serine (or cysteine) proteinase inhibitor, clade A, member 1; PI; PRO2275; MGC9222; MGC23330

Gene ID 5265

mRNA Refseq NM_000295

Protein Refseq NP_000286

MIM 107400

 Tel: 1-631-559-9269 1-516-512-3133

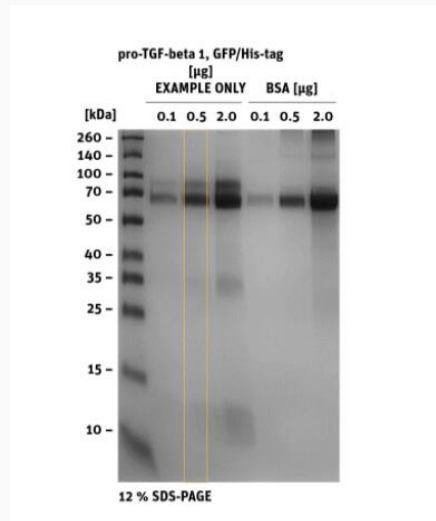
 Email: info@creative-biomart.com  Fax: 1-631-938-8127

 45-1 Ramsey Road, Shirley, NY 11967, USA

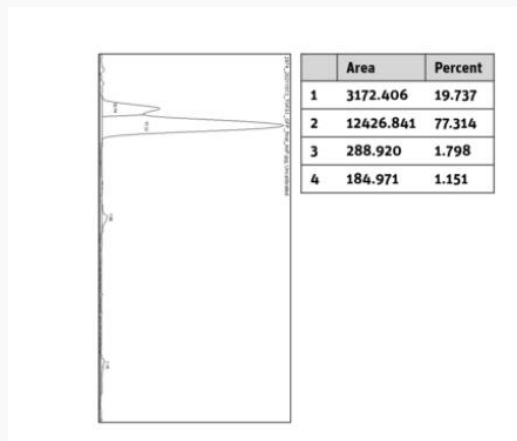
UniProt ID

P01009

SDS-PAGE



Histogram of marked
lane in gel picture



Tel: 1-631-559-9269 1-516-512-3133

Email: info@creative-biomart.com Fax: 1-631-938-8127

45-1 Ramsey Road, Shirley, NY 11967, USA