

Recombinant Rhesus monkey SERPINA1 Protein

Cat. No. SERPINA1-73R Lot. No. (See product label)

SPECIFICATION

Product Overview Recombinant Rhesus monkey SERPINA1 Protein was expressed in E. coli.

Species Rhesus macaque

Source E.coli

Description The protein encoded by this gene is a serine protease inhibitor belonging to the serpin superfamily whose targets include elastase, plasmin, thrombin, trypsin, chymotrypsin, and plasminogen activator. This protein is produced in the liver, the bone marrow, by lymphocytic and monocytic cells in lymphoid tissue, and by the Paneth cells of the gut. Defects in this gene are associated with chronic obstructive pulmonary disease, emphysema, and chronic liver disease. Several transcript variants encoding the same protein have been found for this gene.

Form Liquid. In 20 mM Tris-HCl, 150mM NaCl, pH8.0.

Molecular Mass ~44.3 kDa

AA Sequence

```
EDPQGDAAQKTDTSHHQDHPKLNKIPSLAEFGFSLYRQLAHQSNSTNIFFSPVSI
ATAFAMLSLGTKADTHSEILEGLNFNVTEIPEAQVHEGFQELLHTLNKPDSQLQLTTG
NGLFLNKSLKVVDFLEDVKKLYHSEAFSVNFEDTEEAKKQINNYVEKETQGGKIVDLV
KELDRDRTVFALVNYIFFKKGWERPFDFVEATKEEDFHVDQATTVKVPMRRLGMFNI
YHCEKLSSWVLLMKYLGNATAIFFLPDEGKLQHLENELTHDIITKFLNENSRSANLH
LPRLAITGTYDLKTVLGHGKITKVFNSGADLSGITEEAPLKLSKAVHKAVLTIDEKGTE
AAGAMFLEAIPMSIPPEVKFNKPFVFLMIEQNTKSPLFMGKVVNPTQK
```

 Tel: 1-631-559-9269 1-516-512-3133

 Email: info@creative-biomart.com  Fax: 1-631-938-8127

 45-1 Ramsey Road, Shirley, NY 11967, USA

Purity	>90%
Storage	Short Term Storage at 4 centigrade, Long Term, please prepare aliquots with 20% glycerol and store at -20 to -80 centigrade. Avoid freeze/thaw cycles.
Concentration	0.12 mg/ml
Official Full Name	Serpin family A member 1

GENE INFORMATION

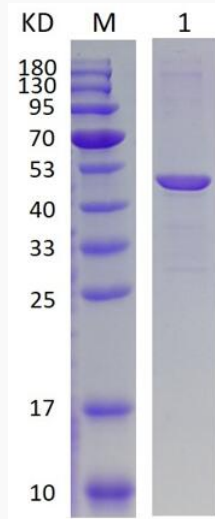
Gene Name	SERPINA1 serpin family A member 1 [<i>Macaca mulatta</i> (Rhesus monkey)]
Official Symbol	SERPINA1
Synonyms	PI; A1A; AAT; PI1; A1AT; nNIF; PRO2275; alpha1AT
Gene ID	701361
mRNA Refseq	NM_001266017
Protein Refseq	NP_001252946
UniProt ID	F6U0C8

 Tel: 1-631-559-9269 1-516-512-3133

 Email: info@creative-biomart.com  Fax: 1-631-938-8127

 45-1 Ramsey Road, Shirley, NY 11967, USA

SDS-PAGE



15% SDS-PAGE analysis profiles of purified Recombinant Rhesus monkey SERPINA1 Protein (CBB stained).

 Tel: 1-631-559-9269 1-516-512-3133

 Email: info@creative-biomart.com  Fax: 1-631-938-8127

 45-1 Ramsey Road, Shirley, NY 11967, USA