

Recombinant Human SERPINA10 protein, His-tagged

Cat. No. SERPINA10-2588H Lot. No. (See product label)

SPECIFICATION

Product Overview	Recombinant Human SERPINA10 protein(1-444 aa), fused with N-terminal His tag, was expressed in E.coli.
Species	Human
Source	E.coli
ProteinLength	1-444 aa
Form	The purified protein was lyophilized from sterile phosphate-buffered saline (PBS: 58 mM Na ₂ HPO ₄ , 17 mM NaH ₂ PO ₄ , 68 mM NaCl, pH 7.4). Prior to lyophilization, 5% (w/v) trehalose and 5% (w/v) mannitol were incorporated as cryoprotective excipients.
AASequence	MKVVPSLLLSVLLAQVWLVVPLAPSPQSPETPAPQNQTSRVVQAPKEEEEDEQEAS EEKASEEEKAWLMASRQQLAKETSNGFSLLRKISMRHDGNNMVFSPFGMSLAMTG LMLGATGPTETQIKRGLHLQALKPTKPGLLPSLFKGLRETLNRNLELGLTQGSFAFIH KDFDVKETFFNLSKRYFDTECVPMNFRNASQAKRLMNHYINKETRGIKPLFDEINP ETKLILVDYILFKGKWLTPFDPVFTEVDTFHLDKYKTIKVPMMYGAGKFASTFDKNFR CHVLKLPYQGNATMLVVLMEKMGDHLALEDYLTDDLVTWLRNMKTRNMEVFFPKF KLDQKYEMHELLRQMGIRRIFFADLSELSATGRNLQVSRVLQRTVIEVDERGTEA VAGILSEITAYSMPPIKVDPRPFHFMIEETSGMLLFLGRVNPNTLL
Purity	85%, by SDS-PAGE with Coomassie Brilliant Blue staining.

 Tel: 1-631-559-9269 1-516-512-3133

 Email: info@creative-biomart.com  Fax: 1-631-938-8127

 45-1 Ramsey Road, Shirley, NY 11967, USA

Storage

Store at 2-8°C for 1-2 weeks. Aliquot and store at -20°C to -80°C for up to 3 months, reconstitution with sterile water and addition of an equal volume of glycerol. Avoid repeat freeze-thaw cycles.

Reconstitution

Dissolve the product in 200 µl sterile water to achieve a working concentration of 0.25 g/µl. If experimental compatibility allows, mix the aqueous solution with an equal volume of glycerol (1:1 ratio) after initial reconstitution.

GENE INFORMATION

Gene Name

SERPINA10 serpin peptidase inhibitor, clade A (alpha-1 antiproteinase, antitrypsin), member 10 [Homo sapiens]

Official Symbol

SERPINA10

Synonyms

SERPINA10; serpin peptidase inhibitor, clade A (alpha-1 antiproteinase, antitrypsin), member 10; serine (or cysteine) proteinase inhibitor, clade A (alpha 1 antiproteinase, antitrypsin), member 10; protein Z-dependent protease inhibitor; PZI; ZPI; serpin A10; PZ-dependent protease inhibitor; serine (or cysteine) proteinase inhibitor, clade A (alpha-1 antiproteinase, antitrypsin), member 10;

Gene ID

51156

mRNA Refseq

NM_001100607

Protein Refseq

NP_001094077

MIM

605271

UniProt ID

Q9UK55

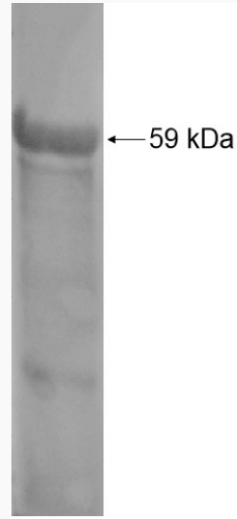
 Tel: 1-631-559-9269 1-516-512-3133

 Email: info@creative-biomart.com  Fax: 1-631-938-8127

 45-1 Ramsey Road, Shirley, NY 11967, USA



SDS-PAGE



☎ Tel: 1-631-559-9269 1-516-512-3133

☎ Email: info@creative-biomart.com ☎ Fax: 1-631-938-8127

☎ 45-1 Ramsey Road, Shirley, NY 11967, USA