

# Recombinant Human SERPINA10 Protein, Myc/DDK-tagged, C13 and N15-labeled

Cat. No. SERPINA10-3862H Lot. No. (See product label)

## SPECIFICATION

<b>Product Overview</b>	SERPINA10 MS Standard C13 and N15-labeled recombinant protein (NP_057270) with a C-terminal MYC/DDK tag, was expressed in HEK293 cells.
<b>Species</b>	Human
<b>Source</b>	HEK293
<b>Description</b>	The protein encoded by this gene belongs to the serpin family. It is predominantly expressed in the liver and secreted in plasma. It inhibits the activity of coagulation factors Xa and XIa in the presence of protein Z, calcium and phospholipid. Mutations in this gene are associated with venous thrombosis. Alternatively spliced transcript variants have been found for this gene.
<b>Molecular Mass</b>	50.5 kDa
<b>AA Sequence</b>	<p>MKVVPSLLLSVLLAQVWLVPGLAPSPQSPETPAPQNQTSRVVQAPKEEEEDEQEAS            EEKASEEEKAWLMASRQQLAKETSNFGFSLLRKISMHRDGNMVFSPFGMSLAMTG            LMLGATGPTETQIKRGLHLQALKPTKPLLPSLFKGLRETLRNLELGLTQGSFAFIH            KDFDVKETFFNLSKRYFDTECVPMNFRNASQAKRLMNHYINKETRGKIPKLFDEINP            ETKLILVDYILFKGKWLTPFDPVFTEVDTFHLDKYKTIKVPMMYGAGKFASTFDKNFR            CHVLKLPYQGNATMLVVLMEKMGDHLALEDYLTDDLVTWLRNMKTRNMEVFFPKF            KLDQKYEMHELLRQMGIRRIFFSPFADLSELSATGRNLQVSRVLQRTVIEVDERGTEA            VAGILSEITAYSMPPVIKVDPRPFHFMIYEETSGMLLFLGRVVNPTLLTRTRPLEQKLIS</p>

Tel: 1-631-559-9269 1-516-512-3133

Email: [info@creative-biomart.com](mailto:info@creative-biomart.com) Fax: 1-631-938-8127

45-1 Ramsey Road, Shirley, NY 11967, USA

EEDLAANDILDYKDDDDKV

**Purity** > 80% as determined by SDS-PAGE and Coomassie blue staining

**Stability** Stable for 3 months from receipt of products under proper storage and handling conditions.

**Storage** Store at -80 centigrade. Avoid repeated freeze-thaw cycles.

**Concentration** 50 µg/mL as determined by BCA

**Storage Buffer** 100 mM glycine, 25 mM Tris-HCl, pH 7.3.

## GENE INFORMATION

**Gene Name** [SERPINA10 serpin family A member 10 \[ Homo sapiens \(human\) \]](#)

**Official Symbol** [SERPINA10](#)

**Synonyms** SERPINA10; serpin peptidase inhibitor, clade A (alpha-1 antiproteinase, antitrypsin), member 10; serine (or cysteine) proteinase inhibitor, clade A (alpha 1 antiproteinase, antitrypsin), member 10; protein Z-dependent protease inhibitor; PZI; ZPI; serpin A10; PZ-dependent protease inhibitor; serine (or cysteine) proteinase inhibitor, clade A (alpha-1 antiproteinase, antitrypsin), member 10;

**Gene ID** [51156](#)

**mRNA Refseq** [NM\\_016186](#)

**Protein Refseq** [NP\\_057270](#)

 Tel: 1-631-559-9269 1-516-512-3133

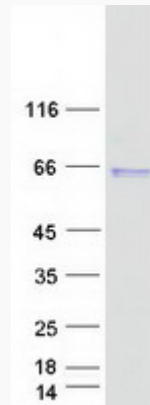
 Email: [info@creative-biomart.com](mailto:info@creative-biomart.com)  Fax: 1-631-938-8127

 45-1 Ramsey Road, Shirley, NY 11967, USA

MIM 605271

UniProt ID Q9UK55

SDS-PAGE



 Tel: 1-631-559-9269 1-516-512-3133

 Email: [info@creative-biomart.com](mailto:info@creative-biomart.com)  Fax: 1-631-938-8127

 45-1 Ramsey Road, Shirley, NY 11967, USA