

## Recombinant Human SERPINA10 Protein (Leu22-Leu444), C-His tagged

Cat. No. SERPINA10-5894H Lot. No. (See product label)

### SPECIFICATION

<b>Product Overview</b>	Recombinant human SERPINA10 (Leu22-Leu444) fused with the C-terminal His tag was expressed in mammalian cells.
<b>Species</b>	Human
<b>Source</b>	Mammalian Cells
<b>ProteinLength</b>	Leu22-Leu444
<b>Form</b>	Lyophilized powder/frozen liquid
<b>Molecular Mass</b>	46.53 kDa
<b>Purity</b>	> 90 % as determined by SDS-PAGE
<b>Notes</b>	For research use only.
<b>Storage</b>	Use a manual defrost freezer and avoid repeated freeze thaw cycles. Store at 2 to 8 centigrade for one week. Store at -20 to -80 centigrade for twelve months from the date of receipt.
<b>Storage Buffer</b>	Supplied as solution form in PBS or lyophilized from PBS.
<b>Reconstitution</b>	Reconstitute in sterile water for a stock solution.

 Tel: 1-631-559-9269 1-516-512-3133

 Email: [info@creative-biomart.com](mailto:info@creative-biomart.com)  Fax: 1-631-938-8127

 45-1 Ramsey Road, Shirley, NY 11967, USA

**Shipping** They are shipped out with dry ice/blue ice unless customers require otherwise.

## GENE INFORMATION

**Gene Name** [SERPINA10 serpin family A member 10 \[ Homo sapiens \(human\) \]](#)

**Official Symbol** [SERPINA10](#)

**Synonyms** SERPINA10; serpin peptidase inhibitor, clade A (alpha-1 antiproteinase, antitrypsin), member 10; serine (or cysteine) proteinase inhibitor, clade A (alpha 1 antiproteinase, antitrypsin), member 10; protein Z-dependent protease inhibitor; PZI; ZPI; serpin A10; PZ-dependent protease inhibitor; serine (or cysteine) proteinase inhibitor, clade A (alpha-1 antiproteinase, antitrypsin), member 10;

**Gene ID** [51156](#)

**mRNA Refseq** [NM\\_001100607](#)

**Protein Refseq** [NP\\_001094077](#)

**MIM** [605271](#)

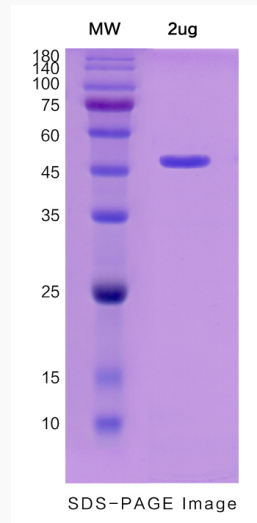
**UniProt ID** [Q9UK55](#)

 Tel: 1-631-559-9269 1-516-512-3133

 Email: [info@creative-biomart.com](mailto:info@creative-biomart.com)  Fax: 1-631-938-8127

 45-1 Ramsey Road, Shirley, NY 11967, USA

**SDS-PAGE**



 Tel: 1-631-559-9269 1-516-512-3133

 Email: [info@creative-biomart.com](mailto:info@creative-biomart.com)  Fax: 1-631-938-8127

 45-1 Ramsey Road, Shirley, NY 11967, USA