

# Recombinant Human SERPINA12 Protein, Met1-Lys414, C-DDK and His tagged

**Cat. No.** SERPINA12-005H    **Lot. No.** (See product label)

## SPECIFICATION

<b>Product Overview</b>	Recombinant Human SERPINA12 Protein (Met1-Lys414) with C-DDK and His tag was expressed in HEK293.
<b>Species</b>	Human
<b>Source</b>	HEK293
<b>ProteinLength</b>	Met1-Lys414
<b>Description</b>	Visceral adipose tissue-derived serpin (Vaspin) aka SerpinA12 is an adipokine originally isolated from visceral adipose tissue and is a member of the Serpin family of serine protease inhibitors. Increased levels of vaspin are observed in obesity as well as type 2 diabetes and its expression positively correlates to body mass index and insulin sensitivity.
<b>Form</b>	Lyophilized
<b>Molecular Mass</b>	Predicted Molecular Mass: 45.1kDa SDS-PAGE: 56kDa, reducing conditions
<b>Purity</b>	> 95% as analyzed by SDS-PAGE
<b>N-terminal Sequence Analysis</b>	Leu21 predicted

 Tel: 1-631-559-9269    1-516-512-3133

 Email: [info@creative-biomart.com](mailto:info@creative-biomart.com)     Fax: 1-631-938-8127

 45-1 Ramsey Road, Shirley, NY 11967, USA

<b>Applications</b>	ELISA and Western Blot Analysis
<b>Notes</b>	For Research Use Only.
<b>Storage</b>	2 years at -20 to -80 centigrade as supplied. 1 month at 4 centigrade after reconstitution with preservative. 1 year at -20 to -80 centigrade after reconstitution.
<b>Storage Buffer</b>	Lyophilized from 1xPBS with Trelahose
<b>Shipping</b>	Ambient
<b>Reconstitution</b>	Reconstitute at 50 µg/mL in sterile PBS containing at least 0.1% protein

## GENE INFORMATION

<b>Gene Name</b>	SERPINA12 serpin peptidase inhibitor, clade A (alpha-1 antiproteinase, antitrypsin), member 12 [ Homo sapiens (human) ]
<b>Official Symbol</b>	SERPINA12
<b>Synonyms</b>	SERPINA12; serpin peptidase inhibitor, clade A (alpha-1 antiproteinase, antitrypsin), member 12; serine (or cysteine) proteinase inhibitor, clade A (alpha 1 antiproteinase, antitrypsin), member 12; serpin A12; OL 64; Vaspin; vaspin; visceral adipose-specific SERPIN; visceral adipose tissue-derived serine protease inhibitor; serine (or cysteine) proteinase inhibitor, clade A (alpha-1 antiproteinase, antitrypsin), member 12; OL-64
<b>Gene ID</b>	145264
<b>mRNA Refseq</b>	NM_173850

 Tel: 1-631-559-9269 1-516-512-3133

 Email: [info@creative-biomart.com](mailto:info@creative-biomart.com)  Fax: 1-631-938-8127

 45-1 Ramsey Road, Shirley, NY 11967, USA

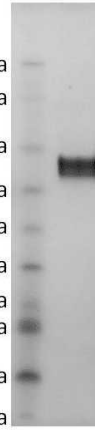
**Protein Refseq** NP\_776249

**MIM** 617471

**UniProt ID** Q8IW75

**Vaspin on a  
Coomassie stained  
4-12% SDS-PAGE  
gel, reducing  
conditions.**

188kDa  
98kDa  
62kDa  
49kDa  
38kDa  
28kDa  
17kDa  
14kDa  
6kDa  
3kDa



 Tel: 1-631-559-9269 1-516-512-3133

 Email: [info@creative-biomart.com](mailto:info@creative-biomart.com)  Fax: 1-631-938-8127

 45-1 Ramsey Road, Shirley, NY 11967, USA