

# Recombinant Human SERPINA12 Protein, Myc/DDK-tagged, C13 and N15-labeled

Cat. No. SERPINA12-1186H Lot. No. (See product label)

## SPECIFICATION

<b>Product Overview</b>	SERPINA12 MS Standard C13 and N15-labeled recombinant protein (NP_776249) with a C-terminal MYC/DDK tag, was expressed in HEK293 cells.
<b>Species</b>	Human
<b>Source</b>	HEK293
<b>Description</b>	SERPINA12 (Serpine Family A Member 12) is a Protein Coding gene. Diseases associated with SERPINA12 include Carotid Stenosis and Body Mass Index Quantitative Trait Locus 11. Among its related pathways are Common Cytokine Receptor Gamma-Chain Family Signaling Pathways. Gene Ontology (GO) annotations related to this gene include serine-type endopeptidase inhibitor activity. An important paralog of this gene is SERPINA1.
<b>Molecular Mass</b>	47.2 kDa
<b>AA Sequence</b>	MNPTLGLAIFLAVLLTVKGLLKPSFSPRNYKALSEVQGWKQRMAAKELARQNMDLG FKLLKKLAFYNPGRNIFLSPLSISTAFSMLCLGAQDSTLDEIKQGFNFRKMPEKDLHE GFHYIIHELTQKTQDLKLSIGNTLFIDQRLQPQRKFLEDAKNFYSAETILTNFQNLEMA QKQINDFISQKTHGKINLIENIDPGTVMLLANYIFFRARWKHEFDPNVTKEEDFFLEK NSSVKVPMFRSGIYQVGYDDKLSCTILEIPYQKNITAIFILPDEGKCLKHLEKGLQVDT FSRWKTLLSRRVVDVSVPRLHMTGTDFLKKTL SYIGVSKIFEEHGDLTKIAPHRSLKV GEAVHKAELKMDERGTEGAAGTGAQTLPMETPLVVKIDKPYLLLIYSEKIPSVLFLGKI

 Tel: 1-631-559-9269 1-516-512-3133

 Email: [info@creative-biomart.com](mailto:info@creative-biomart.com)  Fax: 1-631-938-8127

 45-1 Ramsey Road, Shirley, NY 11967, USA

VNPIGKTRTRPLEQKLISEEDLAANDILDYKDDDDKV

**Purity** > 80% as determined by SDS-PAGE and Coomassie blue staining

**Stability** Stable for 3 months from receipt of products under proper storage and handling conditions.

**Storage** Store at -80 centigrade. Avoid repeated freeze-thaw cycles.

**Concentration** 50 µg/mL as determined by BCA

**Storage Buffer** 100 mM glycine, 25 mM Tris-HCl, pH 7.3.

## GENE INFORMATION

**Gene Name** [SERPINA12 serpin family A member 12 \[ Homo sapiens \(human\) \]](#)

**Official Symbol** [SERPINA12](#)

**Synonyms** SERPINA12; serpin peptidase inhibitor, clade A (alpha-1 antiproteinase, antitrypsin), member 12; serine (or cysteine) proteinase inhibitor, clade A (alpha 1 antiproteinase, antitrypsin), member 12; serpin A12; OL 64; Vaspin; vaspin; visceral adipose-specific SERPIN; visceral adipose tissue-derived serine protease inhibitor; serine (or cysteine) proteinase inhibitor, clade A (alpha-1 antiproteinase, antitrypsin), member 12; OL-64;

**Gene ID** [145264](#)

**mRNA Refseq** [NM\\_173850](#)

**Protein Refseq** [NP\\_776249](#)

 Tel: 1-631-559-9269 1-516-512-3133

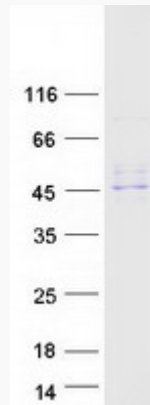
 Email: [info@creative-biomart.com](mailto:info@creative-biomart.com)  Fax: 1-631-938-8127

 45-1 Ramsey Road, Shirley, NY 11967, USA

**MIM** 617471

**UniProt ID** Q8IW75

**SDS-PAGE**



 Tel: 1-631-559-9269 1-516-512-3133

 Email: [info@creative-biomart.com](mailto:info@creative-biomart.com)  Fax: 1-631-938-8127

 45-1 Ramsey Road, Shirley, NY 11967, USA