

Recombinant Human SERPINA12, His-tagged

Cat. No. SERPINA12-3756H Lot. No. (See product label)

SPECIFICATION

Product Overview	Total 408 AA. MW: 46.7 kDa (calculated). N-terminal His-tag, 14 extra AA (highlighted). The AA sequence is identical to UniProtKB/Swiss-Prot entry Q8IW75.
Species	Human
Source	E.coli
Description	Visceral adipose tissue - derived serpin A12 (vaspin), also named OL-64, an adipocytokine, is structurally a member of the serine protease family. Serpins are the most diverse family of protease inhibitors. Their typical structural feature is the core domain composed from 3 beta-sheets and 9 alpha-helices. The inhibitory activity of vaspin has not been described up to now, but its reactive site loop is typical for this proteinase family.
Form	Filtered (0.4 µm) and lyophilized from 0.5 mg/ml in 20mM Tris buffer, 150mMNaCl, pH 7.5.
Research topic	Diabetology - Autoimmunity, Energy metabolism and body weight regulation, Reproduction.
Reconstitution	Add deionized water to prepare a working stock solution of approximately 0.5 mg/mL and let the lyophilized pellet dissolve completely. Product is not sterile! Please filter the product by an appropriate sterile filter before using it in the cell culture.
Applications	Western blotting

 Tel: 1-631-559-9269 1-516-512-3133

 Email: info@creative-biomart.com  Fax: 1-631-938-8127

 45-1 Ramsey Road, Shirley, NY 11967, USA

Quality Control Test BCA to determine quantity of the protein; SDS PAGE to determine purity of the protein.

Sequences of amino acids

MRGSHHHHHH GMASLKPSFS PRNYKALSEV QGWKQRMAAK ELARQNMDLG
 FKLLKKLAFY NPGRNIFLSP LSISTAFSML CLGAQDSTLD EIKQGFNFRK
 MPEKDLHEGF HYIIHELTKQ TQDLKLSIGN TLFIDQRLQP QRKFLEDAKN
 FYSAETILTN FQNLEMAQKQ INDFISQKTH GKINNLINI DPGTVMLLAN
 YIFFRARWKH EFDPNVTKEE DFFLEKNSSV KVPMMFRSGI YQVGYDDKLS
 CTILEIPYQK NITAFILPD EGKCLKHLEKG LQVDTFSRWK TLLSRRVVDV
 SVPRLHMTGT FDLKKTLSYI GVSKIFEEHG DLTKIAPHRS LKVGAEVHKA
 ELKMDERGTE GAAGTGAQTL PMETPLVVKI DKPYLLLIYS EKIPSVLFLG
 KIVNPIGK

Storage Store lyophilized protein at -20°C. Lyophilized protein remains stable until the expiry date when stored at -20°C. Aliquot reconstituted protein to avoid repeated freezing/thawing cycles and store at -80°C for long term storage. Reconstituted protein can be stored at 4°C for a limited period of time; it does not show any change after one week at 4°C.

GENE INFORMATION

Gene Name SERPINA12 serpin peptidase inhibitor, clade A (alpha-1 antiproteinase, antitrypsin), member 12 [Homo sapiens]

Official Symbol SERPINA12

Synonyms SERPINA12; serpin peptidase inhibitor, clade A (alpha-1 antiproteinase, antitrypsin), member 12; OL-64; serine (or cysteine) proteinase inhibitor, clade A (alpha-1 antiproteinase, antitrypsin), member 12; Vaspin; Visceral adipose tissue-derived serine protease inhibitor; Visceral adipose-specific serpin; serpin A12; vaspin

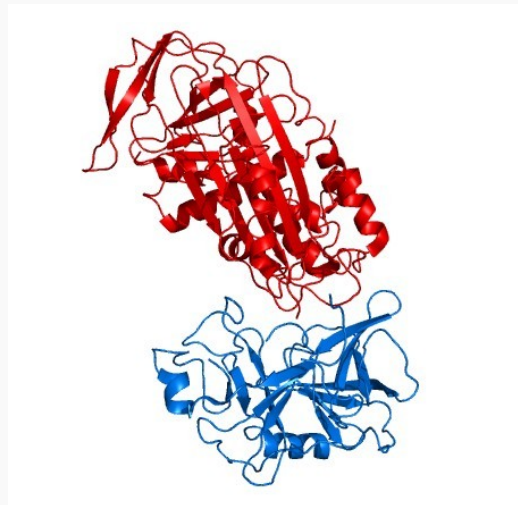
 Tel: 1-631-559-9269 1-516-512-3133

 Email: info@creative-biomart.com  Fax: 1-631-938-8127

 45-1 Ramsey Road, Shirley, NY 11967, USA

Gene ID	145264
mRNA Refseq	NM_173850
Protein Refseq	NP_776249
UniProt ID	Q8IW75
Chromosome Location	14q32.13
Function	peptidase inhibitor activity; serine-type endopeptidase inhibitor activity

2D26

 Tel: 1-631-559-9269 1-516-512-3133 Email: info@creative-biomart.com  Fax: 1-631-938-8127 45-1 Ramsey Road, Shirley, NY 11967, USA