

## Recombinant Mouse SERPINA1E Protein, His tagged

Cat. No. SERPINA1E-143M Lot. No. (See product label)

### SPECIFICATION

<b>Product Overview</b>	Recombinant Mouse SERPINA1E protein with His-tag was expressed in E. coli.
<b>Species</b>	Mouse
<b>Source</b>	E.coli
<b>Description</b>	Predicted to enable identical protein binding activity; protease binding activity; and serine-type endopeptidase inhibitor activity. Acts upstream of or within response to cytokine and response to peptide hormone. Predicted to be located in Golgi apparatus and endoplasmic reticulum. Predicted to be active in extracellular space. Is expressed in gut; liver lobe; metanephros; and nucleus pulposus. Human ortholog(s) of this gene implicated in several diseases, including alpha 1-antitrypsin deficiency; artery disease (multiple); chronic obstructive pulmonary disease (multiple); inflammatory bowel disease (multiple); and liver disease (multiple). Orthologous to human SERPINA1 (serpin family A member 1).
<b>Molecular Mass</b>	The protein has a calculated MW of 44.92 kDa.
<b>AA Sequence</b>	MNHKVVHHHHHHMEDVQETDTSQKDQSPASHEIATNLGDF AISLYREL VHQSNTSNI FFSPVSIATAFAMLSLGSKGDHTHTQILEGLQFNLTQTSEADIHNSFQHLLQTLNRPDS ELQLSTGNGLFVNNDLKLVEKFL EEAKNHYQAEVFSVNFAESEEAKKVINDFVEKGT QGKIVEAVKKLEQDTVFLANYILFKGKWKKPPDPENTKQAEFHVDESTTVKVPMMT LSGMLDVHHCSTLSSWVLLMDYAGNATAVFLLPDDGKMQHLEQTLNKE LISKFLLNR RRRLAQIHIPRLSISGNYNLETLMSPLGITRIFNSGADLSGITEENAPLKLSQAVHKAVL

 Tel: 1-631-559-9269 1-516-512-3133

 Email: [info@creative-biomart.com](mailto:info@creative-biomart.com)  Fax: 1-631-938-8127

 45-1 Ramsey Road, Shirley, NY 11967, USA

TIDETGTEAAAATVLQGGFLSMPPILHFNRPFLFIIFEEHSQSPLFVGKVVDPTHK

**Purity** > 90% by SDS-PAGE

**Storage** Store it under sterile conditions at -20 to -80 centigrade. It is recommended that the protein be aliquoted for optimal storage. Avoid repeated freeze-thaw cycles.

**Storage Buffer** 20 mM Tris-HCl, 100 M NaCl, pH8.0

## GENE INFORMATION

**Gene Name** [Serpina1e serine \(or cysteine\) peptidase inhibitor, clade A, member 1E \[ Mus musculus \(house mouse\) \]](#)

**Official Symbol** [Serpina1e](#)

**Synonyms** Serpina1e; serine (or cysteine) peptidase inhibitor, clade A, member 1E; PI5; Dom5; Spi1-5; alpha-1-antitrypsin 1-5; alpha-1 protease inhibitor 5; serine (or cysteine) proteinase inhibitor, clade A, member 1e; serine protease inhibitor 1-5; serine protease inhibitor A1e; serpin A1e

**Gene ID** [20704](#)

**mRNA Refseq** [NM\\_009247](#)

**Protein Refseq** [NP\\_033273](#)

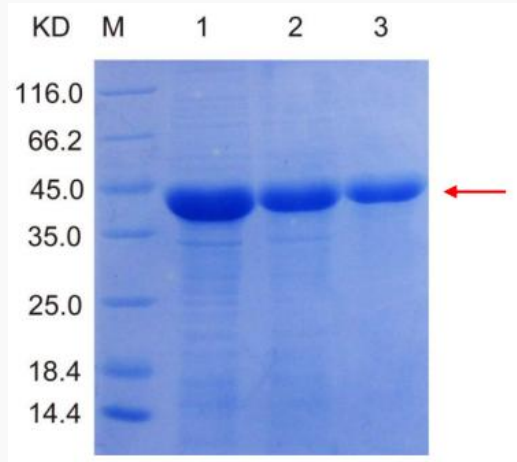
**UniProt ID** [Q00896](#)

 Tel: 1-631-559-9269 1-516-512-3133

 Email: [info@creative-biomart.com](mailto:info@creative-biomart.com)  Fax: 1-631-938-8127

 45-1 Ramsey Road, Shirley, NY 11967, USA

**Reducing 12% SDS-  
PAGE profile of  
purified SERPINA1E**



Lane M: Protein Marker  
Lane 1: Un-purified  
Lane 2: Flow through  
Lane 3: Elution

 Tel: 1-631-559-9269 1-516-512-3133

 Email: [info@creative-biomart.com](mailto:info@creative-biomart.com)  Fax: 1-631-938-8127

 45-1 Ramsey Road, Shirley, NY 11967, USA