

# Recombinant Full Length Mouse Serpina1e Protein, Flag-tagged

**Cat. No.** SERPINA1E-14919M    **Lot. No.** (See product label)

## SPECIFICATION

<b>Product Overview</b>	Recombinant Full Length Mouse Serpina1e Protein (1-412 aa) with Flag tag was expressed in HEK293.
<b>Species</b>	Mouse
<b>Source</b>	HEK293
<b>ProteinLength</b>	1-412 aa
<b>Description</b>	Predicted to enable identical protein binding activity; protease binding activity; and serine-type endopeptidase inhibitor activity. Acts upstream of or within response to cytokine and response to peptide hormone. Predicted to be located in Golgi apparatus and endoplasmic reticulum. Predicted to be active in extracellular space. Is expressed in gut; liver lobe; metanephros; and nucleus pulposus. Human ortholog(s) of this gene implicated in several diseases, including alpha 1-antitrypsin deficiency; artery disease (multiple); chronic obstructive pulmonary disease (multiple); inflammatory bowel disease (multiple); and liver disease (multiple). Orthologous to human SERPINA1 (serpin family A member 1).
<b>Tag</b>	Flag
<b>Molecular Mass</b>	45.5kDa
<b>Purity</b>	≥ 90% by SDS-PAGE

 Tel: 1-631-559-9269    1-516-512-3133

 Email: [info@creative-biomart.com](mailto:info@creative-biomart.com)     Fax: 1-631-938-8127

 45-1 Ramsey Road, Shirley, NY 11967, USA

<b>Notes</b>	For testing in cell culture applications, please filter before use. Note that you may experience some loss of protein during the filtration process.
<b>Storage</b>	Store it at -80 centigrade. It is recommended that the protein be aliquoted for optimal storage. Avoid repeated freeze-thaw cycles. Stable for at least 1 year from receipt of products under proper storage and handling conditions
<b>Storage Buffer</b>	PBS, pH 7.4, 10% glycerol
<b>Concentration</b>	0.26 mg/mL

## GENE INFORMATION

<b>Gene Name</b>	<a href="#">Serpina1e serine (or cysteine) peptidase inhibitor, clade A, member 1E [ Mus musculus (house mouse) ]</a>
<b>Official Symbol</b>	<a href="#">Serpina1e</a>
<b>Synonyms</b>	Serpina1e; serine (or cysteine) peptidase inhibitor, clade A, member 1E; PI5; Dom5; Spi1-5; alpha-1-antitrypsin 1-5 alpha-1 protease inhibitor 5 serine (or cysteine) proteinase inhibitor, clade A, member 1e serine protease inhibitor 1-5 serine protease inhibitor A1e serpin A1e
<b>Gene ID</b>	<a href="#">20704</a>
<b>mRNA Refseq</b>	<a href="#">NM_009247</a>
<b>Protein Refseq</b>	<a href="#">NP_033273</a>
<b>UniProt ID</b>	<a href="#">Q00896</a>

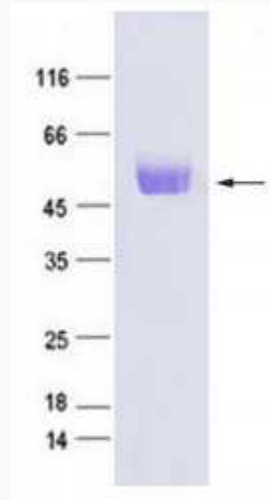
 Tel: 1-631-559-9269 1-516-512-3133

 Email: [info@creative-biomart.com](mailto:info@creative-biomart.com)  Fax: 1-631-938-8127

 45-1 Ramsey Road, Shirley, NY 11967, USA



SDS-PAGE



Tel: 1-631-559-9269 1-516-512-3133

Email: [info@creative-biomart.com](mailto:info@creative-biomart.com) Fax: 1-631-938-8127

45-1 Ramsey Road, Shirley, NY 11967, USA