

## Active Recombinant Human SERPINA3 protein, His-tagged

Cat. No. SERPINA3-2700H Lot. No. (See product label)

### SPECIFICATION

<b>Product Overview</b>	Active Recombinant Human Serpin A3/Alpha-1-antichymotrypsin Protein is produced by HEK293 expression system. The target protein is expressed with sequence (Asn26-Ala423) of human Serpin A3/ACT (Accession #NP_001076.2) fused with a 6xHis tag at the C-terminus.
<b>Species</b>	Human
<b>Source</b>	HEK293
<b>ProteinLength</b>	Asn26-Ala423
<b>Form</b>	Lyophilized from a 0.22 µm filtered solution of PBS, pH 7.4.
<b>Bio-activity</b>	Measured by its ability to inhibit chymotrypsin cleavage of a fluorogenic peptide substrate MCA-RPKPVE-Nval-WRK(Dnp)-NH <sub>2</sub> . The IC <sub>50</sub> value is <11.5 nM.
<b>Molecular Mass</b>	55-70 kDa
<b>Endotoxin</b>	< 0.1 EU/µg of the protein by LAL method.
<b>Purity</b>	> 97% by SDS-PAGE.
<b>Storage</b>	Store the lyophilized protein at -20°C to -80 °C for long term. After reconstitution, the protein solution is stable at -20 °C for 3 months, at 2-8 °C for up to 1 week.

 Tel: 1-631-559-9269 1-516-512-3133

 Email: [info@creative-biomart.com](mailto:info@creative-biomart.com)  Fax: 1-631-938-8127

 45-1 Ramsey Road, Shirley, NY 11967, USA

**Reconstitution** Reconstitute to a concentration of 0.1-0.5 mg/mL in sterile distilled water.

## GENE INFORMATION

**Gene Name** SERPINA3 serpin peptidase inhibitor, clade A (alpha-1 antiproteinase, antitrypsin), member 3 [ Homo sapiens ]

**Official Symbol** SERPINA3

**Synonyms** SERPINA3; serpin peptidase inhibitor, clade A (alpha-1 antiproteinase, antitrypsin), member 3; AACT, alpha 1 antichymotrypsin , serine (or cysteine) proteinase inhibitor, clade A (alpha 1 antiproteinase, antitrypsin), member 3; alpha-1-antichymotrypsin; ACT; alpha 1 antichymotrypsin; serpin A3; growth-inhibiting protein 24; growth-inhibiting protein 25; cell growth-inhibiting gene 24/25 protein; serine (or cysteine) proteinase inhibitor, clade A, member 3; AACT; GIG24; GIG25; MGC88254;

**Gene ID** 12

**mRNA Refseq** NM\_001085

**Protein Refseq** NP\_001076

**MIM** 107280

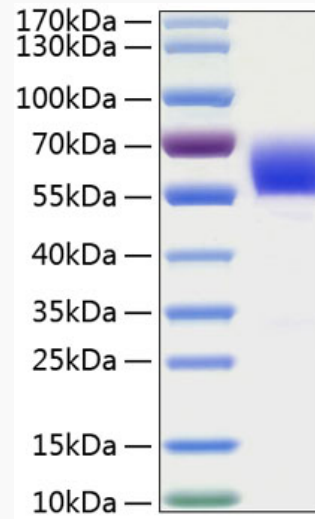
**UniProt ID** P01011

 Tel: 1-631-559-9269 1-516-512-3133

 Email: [info@creative-biomart.com](mailto:info@creative-biomart.com)  Fax: 1-631-938-8127

 45-1 Ramsey Road, Shirley, NY 11967, USA

SDS-PAGE



 Tel: 1-631-559-9269 1-516-512-3133

 Email: [info@creative-biomart.com](mailto:info@creative-biomart.com)  Fax: 1-631-938-8127

 45-1 Ramsey Road, Shirley, NY 11967, USA