

Recombinant Full Length Human SERPINA4 Protein, C-Flag-tagged

Cat. No. SERPINA4-2178HFL **Lot. No.** (See product label)

SPECIFICATION

Product Overview	Recombinant Full Length Human SERPINA4 Protein, fused to Flag-tag at C-terminus, was expressed in Mammalian cells.
Species	Human
Source	Mammalian Cells
Description	Predicted to enable serine-type endopeptidase inhibitor activity. Predicted to be involved in negative regulation of endopeptidase activity. Located in extracellular exosome. Biomarker of diabetic retinopathy.
Form	25 mM Tris HCl, pH 7.3, 100 mM glycine, 10% glycerol.
Molecular Mass	48.4 kDa
AA Sequence	MHLIDYLLLLLVGLLALSHGQLHVEHDGESCNSSSHQQILETGEGSPSLKIAPANADF AFRFYYLIASET PGKNIFFSPLSISAAYAMLSLGACSHRSQILEGLGFNLTELSQSDV HRGFQHLLHTLNLPGHGLETRVG SALFLSHNLKFLAKFLNDTMAVYEAKLFHTNFYD TVGTIQLINDHVKKETRKGIVDLVSELKKDVLMLV NYIYFKALWEKPFISSRTTPKDF YVDENTTVRVPMMMLQDQEHHWYLDHRYLPCSVLRMDYKGDATVFFIL PNQGKMR EIEEVLTPPELMRWNNLLRKRNFYKKLELHLPKFSISGSYVLDQILPRLGFTDLFSKW ADLSG ITKQQKLEASKSFHKATLDVDEAGTEAAAATSFAIKFFSAQTNRHILRFNRPF LVVIFSTSTQSVLFLGK VVDPTKP SGPTRTRPLEQKLISEEDLAANDILDYKDDDDKV

 Tel: 1-631-559-9269 1-516-512-3133

 Email: info@creative-biomart.com  Fax: 1-631-938-8127

 45-1 Ramsey Road, Shirley, NY 11967, USA

Purity	> 80% as determined by SDS-PAGE and Coomassie blue staining.
Stability	Stable for 12 months from the date of receipt of the product under proper storage and handling conditions. Avoid repeated freeze-thaw cycles.
Storage	Store at -80 centigrade.
Concentration	>50 ug/mL as determined by microplate BCA method.
Preparation	Recombinant protein was captured through anti-DDK affinity column followed by conventional chromatography steps.
Protein Families	Druggable Genome, Secreted Protein
Full Length	Full L.

GENE INFORMATION

Gene Name	SERPINA4 serpin family A member 4 [Homo sapiens (human)]
Official Symbol	SERPINA4
Synonyms	KAL; KST; PI4; KLST; PI-4; kallistatin
Gene ID	5267
mRNA Refseq	NM_006215.4
Protein Refseq	NP_006206.2
MIM	147935

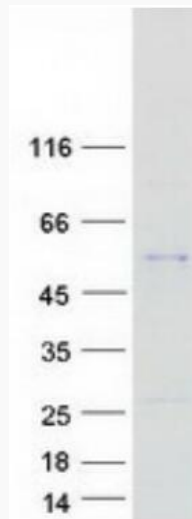
 Tel: 1-631-559-9269 1-516-512-3133

 Email: info@creative-biomart.com  Fax: 1-631-938-8127

 45-1 Ramsey Road, Shirley, NY 11967, USA

UniProt ID

P29622



Coomassie blue staining of purified SERPINA4 protein.

 Tel: 1-631-559-9269 1-516-512-3133

 Email: info@creative-biomart.com  Fax: 1-631-938-8127

 45-1 Ramsey Road, Shirley, NY 11967, USA