

Recombinant Human SERPINA4 Protein, Myc/DDK-tagged, C13 and N15-labeled

Cat. No. SERPINA4-5800H **Lot. No.** (See product label)

SPECIFICATION

Product Overview

SERPINA4 MS Standard C13 and N15-labeled recombinant protein (NP_006206) with a C-terminal MYC/DDK tag, was expressed in HEK293 cells.

Species

Human

Source

HEK293

Description

SERPINA4 (Serpins Family A Member 4) is a Protein Coding gene. Diseases associated with SERPINA4 include Robinow Syndrome, Autosomal Dominant 2 and Ritscher-Schinzel Syndrome 2. Among its related pathways are Response to elevated platelet cytosolic Ca²⁺. Gene Ontology (GO) annotations related to this gene include serine-type endopeptidase inhibitor activity. An important paralog of this gene is SERPINA3.

Molecular Mass

48.5 kDa

AA Sequence

MHLIDYLLLLLVGLLALSHGQLHVEHDGESCNSSSHQQILETGEGSPSLKIAPANADF
 AFRFYLIASETPGKNIFFSPLSISAAYAMLSLGACSHRSQILEGLGFNLTESESDV
 HRGFQHLLHTLNLPGHGLETRVGSALFLSHNLKFLAKFLNDTMAYVEAKLFHTNFYD
 TVGTIQLINDHVKKETRGKIVDLVSELKDDVLMVLVNYIYFKALWEKPFISSRTPKDF
 YVDENTTVRVPMMMLQDQEHHWYLHDRYLPCSVLRMDYKGDATVFFILPNQGKMRE
 IEEVLTPEMLMRWNNLLRKRNFYKLELHLPKFSISGSYVLDQILPRLGFTDLFSKWA
 DLSGITKQKLEASKSFHKATLDVDEAGTEAAAATSFIAKFFSAQTNRHILRFNRPFL

 Tel: 1-631-559-9269 1-516-512-3133

 Email: info@creative-biomart.com  Fax: 1-631-938-8127

 45-1 Ramsey Road, Shirley, NY 11967, USA

VVIFSTSTQSVLFLGKVVDPKPSGPTRTRPLEQKLISEEDLAANDILDYKDDDDKV

Purity > 80% as determined by SDS-PAGE and Coomassie blue staining

Stability Stable for 3 months from receipt of products under proper storage and handling conditions.

Storage Store at -80 centigrade. Avoid repeated freeze-thaw cycles.

Concentration 50 µg/mL as determined by BCA

Storage Buffer 100 mM glycine, 25 mM Tris-HCl, pH 7.3.

GENE INFORMATION

Gene Name [SERPINA4 serpin family A member 4 \[Homo sapiens \(human\) \]](#)

Official Symbol [SERPINA4](#)

Synonyms KAL; KST; PI4; KLST; PI-4; kallistatin

Gene ID [5267](#)

mRNA Refseq [NM_006215](#)

Protein Refseq [NP_006206](#)

MIM [147935](#)

UniProt ID [P29622](#)

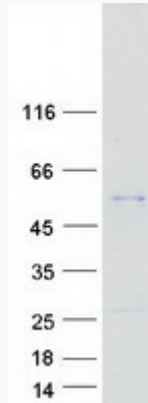
 Tel: 1-631-559-9269 1-516-512-3133

 Email: info@creative-biomart.com  Fax: 1-631-938-8127

 45-1 Ramsey Road, Shirley, NY 11967, USA



SDS-PAGE



Tel: 1-631-559-9269 1-516-512-3133

Email: info@creative-biomart.com Fax: 1-631-938-8127

45-1 Ramsey Road, Shirley, NY 11967, USA