

# Recombinant Human SERPINA7 Protein (Met1-Ala415), C-His tagged

Cat. No. SERPINA7-6400H Lot. No. (See product label)

## SPECIFICATION

<b>Product Overview</b>	Recombinant human SERPINA7 (Met1-Ala415) fused with the C-terminal His tag was expressed in mammalian cells.
<b>Species</b>	Human
<b>Source</b>	Mammalian Cells
<b>ProteinLength</b>	Met1-Ala415
<b>Form</b>	Lyophilized powder/frozen liquid
<b>Molecular Mass</b>	47.22 kDa
<b>Purity</b>	> 90 % as determined by SDS-PAGE
<b>Notes</b>	For research use only.
<b>Storage</b>	Use a manual defrost freezer and avoid repeated freeze thaw cycles. Store at 2 to 8 centigrade for one week. Store at -20 to -80 centigrade for twelve months from the date of receipt.
<b>Storage Buffer</b>	Supplied as solution form in PBS, pH 7.5 or lyophilized from PBS, pH 7.5.
<b>Reconstitution</b>	Reconstitute in sterile water for a stock solution.

 Tel: 1-631-559-9269 1-516-512-3133

 Email: [info@creative-biomart.com](mailto:info@creative-biomart.com)  Fax: 1-631-938-8127

 45-1 Ramsey Road, Shirley, NY 11967, USA

**Shipping** They are shipped out with dry ice/blue ice unless customers require otherwise.

## GENE INFORMATION

**Gene Name** [SERPINA7 serpin family A member 7 \[ Homo sapiens \(human\) \]](#)

**Official Symbol** [SERPINA7](#)

**Synonyms** SERPINA7; serpin peptidase inhibitor, clade A (alpha-1 antiproteinase, antitrypsin), member 7; serine (or cysteine) proteinase inhibitor, clade A (alpha 1 antiproteinase, antitrypsin), member 7, TBG; thyroxine-binding globulin; alpha 1 antiproteinase; antitrypsin; thyroxin binding globulin; thyroxine binding globulin; serpin A7; T4-binding globulin; thyroxin-binding globulin; serine (or cysteine) proteinase inhibitor, clade A (alpha-1 antiproteinase, antitrypsin), member 7; TBG; FLJ17820;

**Gene ID** [6906](#)

**mRNA Refseq** [NM\\_000354](#)

**Protein Refseq** [NP\\_000345](#)

**MIM** [314200](#)

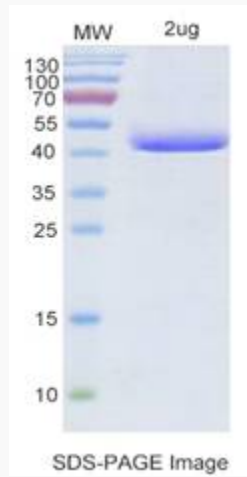
**UniProt ID** [P05543](#)

 Tel: 1-631-559-9269 1-516-512-3133

 Email: [info@creative-biomart.com](mailto:info@creative-biomart.com)  Fax: 1-631-938-8127

 45-1 Ramsey Road, Shirley, NY 11967, USA

SDS-PAGE



 Tel: 1-631-559-9269 1-516-512-3133

 Email: [info@creative-biomart.com](mailto:info@creative-biomart.com)  Fax: 1-631-938-8127

 45-1 Ramsey Road, Shirley, NY 11967, USA