

Active Recombinant Full Length Human SERPINB1 Protein, C-Flag-tagged

Cat. No. SERPINB1-219HFL **Lot. No.** (See product label)

SPECIFICATION

Product Overview	Recombinant Full Length Human SERPINB1 Protein, fused to Flag-tag at C-terminus, was expressed in Mammalian cells.
Species	Human
Source	Mammalian Cells
Description	The protein encoded by this gene is a member of the serpin family of proteinase inhibitors. Members of this family maintain homeostasis by neutralizing overexpressed proteinase activity through their function as suicide substrates. This protein inhibits the neutrophil-derived proteinases neutrophil elastase, cathepsin G, and proteinase-3 and thus protects tissues from damage at inflammatory sites. Alternative splicing results in multiple transcript variants.
Form	25 mM Tris HCl, pH 7.3, 100 mM glycine, 10% glycerol.
Bio-activity	Peptidase assay (inhibitor) ELISA standard
Molecular Mass	42.6 kDa
AA Sequence	MEQLSSANTRFALDLFLALSENNPAGNIFISPFSSISSAMAMVFLGTRGNTAAQLSKTF HFNTVEEVHSRF QSLNADINKRGASYILKLANRLYGEKTYNFLPEFLVSTQKTYGAD LASVDFQHASEDARKTINQWVKGQT EGKIPELLASGMVDNMTKLVLVNAIYFKGNW

 Tel: 1-631-559-9269 1-516-512-3133

 Email: info@creative-biomart.com  Fax: 1-631-938-8127

 45-1 Ramsey Road, Shirley, NY 11967, USA

KDKFMKEATTNAPFRLNKKDRKTVKMMYQKKKFAYGYIE DLKCRVLELPYQGEELS
 MVILLPDDIEDESTGLKKIEEQLTLEKLHEWTKPENLDFIEVNVSLPRFKLEE SYTLNS
 DLARLGVQDLFNSSKADLSGMSGARDIFISKIVHKSFVEVNEEGTEAAAATAGIATFC
 MLMPEE
 NFTADHPFLFFIRHNSSGSILFLGRFSSPTRTRPLEQKLISEEDLAANDILDYKDDDDK
 V

Purity	> 80% as determined by SDS-PAGE and Coomassie blue staining.
Stability	Stable for 12 months from the date of receipt of the product under proper storage and handling conditions. Avoid repeated freeze-thaw cycles.
Storage	Store at -80 centigrade.
Concentration	>50 ug/mL as determined by microplate BCA method.
Preparation	Recombinant protein was captured through anti-DDK affinity column followed by conventional chromatography steps.
Protein Families	Druggable Genome
Full Length	Full L.

GENE INFORMATION

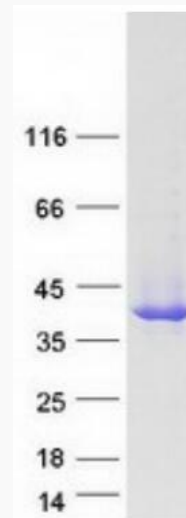
Gene Name	SERPINB1 serpin family B member 1 [Homo sapiens (human)]
Official Symbol	SERPINB1
Synonyms	EI; LEI; PI2; MNEI; PI-2; HEL57; M/NEI; ELANH2; HEL-S-27

 Tel: 1-631-559-9269 1-516-512-3133

 Email: info@creative-biomart.com  Fax: 1-631-938-8127

 45-1 Ramsey Road, Shirley, NY 11967, USA

Gene ID	1992
mRNA Refseq	NM_030666.4
Protein Refseq	NP_109591.1
MIM	130135
UniProt ID	P30740



Coomassie blue staining of purified SERPINB1 protein.

Tel: 1-631-559-9269 1-516-512-3133

Email: info@creative-biomart.com Fax: 1-631-938-8127

45-1 Ramsey Road, Shirley, NY 11967, USA