

Recombinant Human SERPINB1 Protein (Met1-Pro379), C-His tagged

Cat. No. SERPINB1-5735H Lot. No. (See product label)

SPECIFICATION

Product Overview	Recombinant human SERPINB1 (Met1-Pro379) fused with the C-terminal His tag was expressed in mammalian cells.
Species	Human
Source	Mammalian Cells
ProteinLength	Met1-Pro379
Form	Lyophilized powder/frozen liquid
Molecular Mass	41.69 kDa
Purity	> 90 % as determined by SDS-PAGE
Notes	For research use only.
Storage	Use a manual defrost freezer and avoid repeated freeze thaw cycles. Store at 2 to 8 centigrade for one week. Store at -20 to -80 centigrade for twelve months from the date of receipt.
Storage Buffer	Supplied as solution form in PBS or lyophilized from PBS.
Reconstitution	Reconstitute in sterile water for a stock solution.

 Tel: 1-631-559-9269 1-516-512-3133

 Email: info@creative-biomart.com  Fax: 1-631-938-8127

 45-1 Ramsey Road, Shirley, NY 11967, USA

Shipping They are shipped out with dry ice/blue ice unless customers require otherwise.

GENE INFORMATION

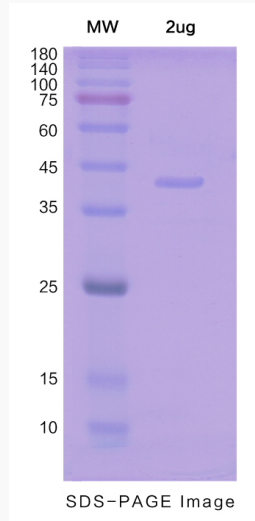
Gene Name	SERPINB1 serpin peptidase inhibitor, clade B (ovalbumin), member 1 [Homo sapiens (human)]
Official Symbol	SERPINB1
Synonyms	SERPINB1; serpin peptidase inhibitor, clade B (ovalbumin), member 1; ELANH2, serine (or cysteine) proteinase inhibitor, clade B (ovalbumin), member 1; leukocyte elastase inhibitor; anti elastase; EI; PI2; PI-2; serpin B1; anti-elastase; peptidase inhibitor 2; monocyte/neutrophil elastase inhibitor; protease inhibitor 2 (anti-elastase), monocyte/neutrophil derived; serine (or cysteine) proteinase inhibitor, clade B (ovalbumin), member 1; LEI; MNEI; M/NEI; ELANH2;
Gene ID	1992
mRNA Refseq	NM_030666
Protein Refseq	NP_109591
MIM	130135
UniProt ID	P30740

 Tel: 1-631-559-9269 1-516-512-3133

 Email: info@creative-biomart.com  Fax: 1-631-938-8127

 45-1 Ramsey Road, Shirley, NY 11967, USA

SDS-PAGE



 Tel: 1-631-559-9269 1-516-512-3133

 Email: info@creative-biomart.com  Fax: 1-631-938-8127

 45-1 Ramsey Road, Shirley, NY 11967, USA