

Recombinant Human SERPINB10 Protein, Myc/DDK-tagged, C13 and N15-labeled

Cat. No. SERPINB10-2040H Lot. No. (See product label)

SPECIFICATION

Product Overview

SERPINB10 MS Standard C13 and N15-labeled recombinant protein (NP_005015) with a C-terminal MYC/DDK tag, was expressed in HEK293 cells.

Species

Human

Source

HEK293

Description

This gene is a member of the serpin peptidase inhibitor, clade B family and is found in a cluster of other similar genes on chromosome 18. The protein encoded by this gene appears to help control the regulation of protease functions during hematopoiesis. Variations in this gene may increase the risk of prostate cancer.

Molecular Mass

45.4 kDa

AA Sequence

MDSLATSINQFALELSKKLAESAQGKNIFFSSWSISTSLSLIVYLGAKGTAAQMAQVL
 QFNRDQGVKCDPESEKRRKMEFNLSNSEEIHSDFQTLISEILKPNDYLLKTANAIYG
 EKTYAFHNKYLEDMKTYFGAEPQPVNFVEASDQIRKDINSWVERQTEGKIQNLLPDD
 SVDSTTRMILVNALYFKGIWEHQFLVQNTTEKPFRI NETTSKPVQMMFMKKKLHIFHI
 EKPKAVGLQLYYKSRDLSLLILLPEDINGLEQLEKAITYEKLNWTSADMMELYEVQL
 HLPKFKLEDSYDLKSTLSSMGMSDAFSQSKADFGSMSSARNLFLSNVFHKAFVEINE
 QGTEAAAGSGSEINIRIRVPSIEFNANHPFLFFIRHNKTNLIFYGR LCSPTRTRPLEQ
 KLISEEDLAANDILDYKDDDDKV

Purity

> 80% as determined by SDS-PAGE and Coomassie blue staining

 Tel: 1-631-559-9269 1-516-512-3133

 Email: info@creative-biomart.com  Fax: 1-631-938-8127

 45-1 Ramsey Road, Shirley, NY 11967, USA

Stability	Stable for 3 months from receipt of products under proper storage and handling conditions.
Storage	Store at -80 centigrade. Avoid repeated freeze-thaw cycles.
Concentration	50 µg/mL as determined by BCA
Storage Buffer	100 mM glycine, 25 mM Tris-HCl, pH 7.3.

GENE INFORMATION

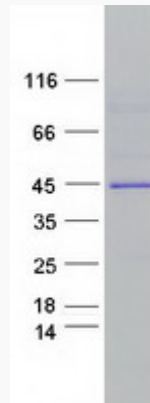
Gene Name	SERPINB10 serpin family B member 10 [Homo sapiens (human)]
Official Symbol	SERPINB10
Synonyms	SERPINB10; serpin peptidase inhibitor, clade B (ovalbumin), member 10; PI10, serine (or cysteine) proteinase inhibitor, clade B (ovalbumin), member 10; serpin B10; bomapin; protease inhibitor 10 (ovalbumin type; bomapin); peptidase inhibitor 10; protease inhibitor 10 (ovalbumin type, bomapin); serine (or cysteine) proteinase inhibitor, clade B (ovalbumin), member 10; PI10; PI-10;
Gene ID	5273
mRNA Refseq	NM_005024
Protein Refseq	NP_005015
MIM	602058
UniProt ID	P48595

 Tel: 1-631-559-9269 1-516-512-3133

 Email: info@creative-biomart.com  Fax: 1-631-938-8127

 45-1 Ramsey Road, Shirley, NY 11967, USA

SDS-PAGE



 Tel: 1-631-559-9269 1-516-512-3133

 Email: info@creative-biomart.com  Fax: 1-631-938-8127

 45-1 Ramsey Road, Shirley, NY 11967, USA