

Recombinant Human SERPINB12 Protein (Met1-Pro425), C-His tagged

Cat. No. SERPINB12-6677H Lot. No. (See product label)

SPECIFICATION

Product Overview	Recombinant human SERPINB12 (Met1-Pro425) fused with the C-terminal His tag was expressed in mammalian cells.
Species	Human
Source	Mammalian Cells
ProteinLength	Met1-Pro425
Form	Lyophilized powder/frozen liquid
Molecular Mass	46.75 kDa
Purity	> 90 % as determined by SDS-PAGE
Notes	For research use only.
Storage	Use a manual defrost freezer and avoid repeated freeze thaw cycles. Store at 2 to 8 centigrade for one week. Store at -20 to -80 centigrade for twelve months from the date of receipt.
Storage Buffer	Supplied as solution form in PBS or lyophilized from PBS.
Reconstitution	Reconstitute in sterile water for a stock solution.

 Tel: 1-631-559-9269 1-516-512-3133

 Email: info@creative-biomart.com  Fax: 1-631-938-8127

 45-1 Ramsey Road, Shirley, NY 11967, USA

Shipping

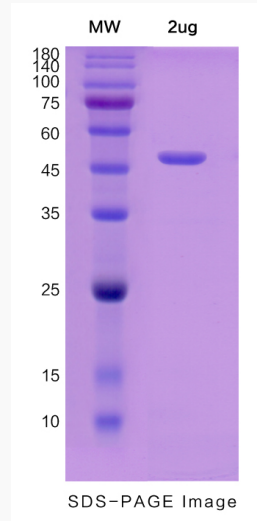
They are shipped out with dry ice/blue ice unless customers require otherwise.

GENE INFORMATION

Gene Name	SERPINB12 serpin peptidase inhibitor, clade B (ovalbumin), member 12 [Homo sapiens (human)]
Official Symbol	SERPINB12
Synonyms	SERPINB12; serpin peptidase inhibitor, clade B (ovalbumin), member 12; serine (or cysteine) proteinase inhibitor, clade B (ovalbumin), member 12; serpin B12; YUKOPIN; MGC119247; MGC119248;
Gene ID	89777
mRNA Refseq	NM_080474
Protein Refseq	NP_536722
MIM	615662
UniProt ID	Q96P63

 Tel: 1-631-559-9269 1-516-512-3133 Email: info@creative-biomart.com  Fax: 1-631-938-8127 45-1 Ramsey Road, Shirley, NY 11967, USA

SDS-PAGE



 Tel: 1-631-559-9269 1-516-512-3133

 Email: info@creative-biomart.com  Fax: 1-631-938-8127

 45-1 Ramsey Road, Shirley, NY 11967, USA