

Recombinant human Serpin B2/PAI-2 Protein, His-tagged

Cat. No. SERPINB2-01H Lot. No. (See product label)

SPECIFICATION

Product Overview	Recombinant human SERPINB2 protein (1-415aa), fused to His-tag at N-terminus, was expressed in E. coli and purified by using conventional chromatography techniques.
Species	Human
Source	E.coli
ProteinLength	1-415aa
Description	Predicted to enable serine-type endopeptidase inhibitor activity. Predicted to be involved in negative regulation of endopeptidase activity. Predicted to be located in extracellular region and plasma membrane. Predicted to be active in extracellular space.
Form	Liquid
Molecular Mass	49.0 kDa (438aa) confirmed by MALDI-TOF
AA Sequence	MEDLCVANTL FALNLFKHLAKASPTQNLFLSPWSISSTMAMVYMGSRGSTEDQMAK VLQFNEVGANAVTPMTPENFTSCGFMQQIQKGSYPDAILQAQAADKIHSSFRSLSSA INASTGNYLLESVNKLFGEKSASFREYIRLCQKYSSPEQAVDFLECAEEARKKINS WVKQTQTKGKIPNLLPEGSVDGDTRMVLVNAVYFKGKWKTPFEKKNGLYPFRVNSA QRTPVQMMYLREKLNIGYIEDLKAQILELPYAGDVSMFLLL PDEIADVSTGLELLESEI TYDKLNKWT SKDKMAEDEVEVYIPQFKLEEHYELRSILRSMGMEDAFNKGRANFSG

 Tel: 1-631-559-9269 1-516-512-3133

 Email: info@creative-biomart.com  Fax: 1-631-938-8127

 45-1 Ramsey Road, Shirley, NY 11967, USA

MSERNDFLSEVFHQAMVDVNEEGTEAAAGTGGVMTGRTGHGGPQFVADHPFLFL
IMHKITNCILFFGRFSSP

Purity > 80% by SDS-PAGE

Applications SDS-PAGE

Storage Can be stored at +2 to +8 centigrade for 1 week. For long term storage, aliquot and store at -20 to -80 centigrade. Avoid repeated freezing and thawing cycles.

Concentration 0.5 mg/mL (determined by Bradford assay)

Storage Buffer Phosphate-Buffered Saline (pH 7.4) containing 30% glycerol, 1 mM DTT

GENE INFORMATION

Gene Name SERPINB2 serpin family B member 2 [Homo sapiens (human)]

Official Symbol SERPINB2

Synonyms SERPINB2; serpin family B member 2; PAI; PAI2; PAI-2; PLANH2; HsT1201; plasminogen activator inhibitor 2; monocyte Arg-serpin; placental plasminogen activator inhibitor; plasminogen activator inhibitor, type II (arginine-serpin); plasminogen-activator inhibitor; serine (or cysteine) proteinase inhibitor, clade B (ovalbumin), member 2; serpin B2; serpin peptidase inhibitor, clade B (ovalbumin), member 2; urokinase inhibitor

Gene ID 5055

mRNA Refseq NM_001143818

 Tel: 1-631-559-9269 1-516-512-3133

 Email: info@creative-biomart.com  Fax: 1-631-938-8127

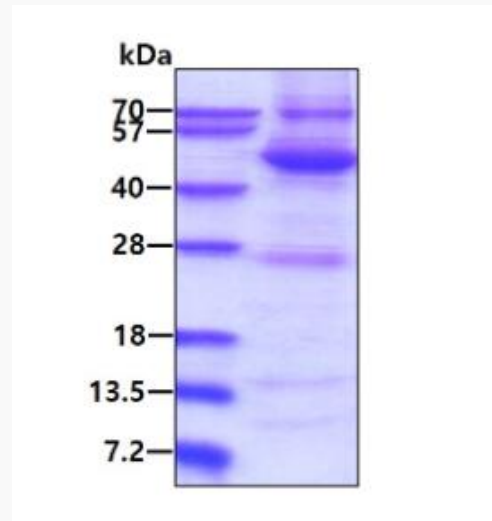
 45-1 Ramsey Road, Shirley, NY 11967, USA

Protein Refseq NP_001137290

MIM 173390

UniProt ID P05120

SDS-PAGE



3ug by SDS PAGE under reducing condition and visualized by coomassie blue stain

 Tel: 1-631-559-9269 1-516-512-3133

 Email: info@creative-biomart.com  Fax: 1-631-938-8127

 45-1 Ramsey Road, Shirley, NY 11967, USA