

Recombinant Rat SERPINB2 Protein (1-416 aa), His-tagged

Cat. No. SERPINB2-1515R Lot. No. (See product label)

SPECIFICATION

Product Overview Recombinant Rat SERPINB2 Protein (1-416 aa) is produced by Yeast expression system. This protein is fused with a 6xHis tag at the N-terminal. Protein Description: Full Length.

Species Rat

Source Yeast

ProteinLength 1-416 aa

Description Inhibits urokinase-type plasminogen activator.

Form Tris-based buffer, 50% glycerol

Molecular Mass 49.2 kDa

AA Sequence

```
MEELSMANTMFALNLLKQIEQSNSTQNIFISPWSISSTLAIVFLGAQANTEEQMAKVL
NFDKIGSYDLTPGNPENFHGCDFAQHIQRDNYPVAILQAQARDKIHSASFSSLSSTINT
PRLGDYLLESANKLFGEKSARFKEEYIQRCKKYSTEPEAVDFLECANEARKKINSW
VKTQTKGEIPNLLPEGSVDEDTKMVLVNTIYFKGRWKTPFQKRLNGLYPFRVNLNES
KPVQMMYLREKLNIGYIKDLKTQILELPYIGNISMFLLLPDEIEDSSTGLEMLEREINF
NFNKWISKETLDEDDVLVYIPKFKLAQNYELKPILQRMGMEDAFNKGKADFSGMSES
NDLFLSEVFHQATVDVNEEGTVAAGGTGAVMTGRTGHGGPQFVADHPFLFFIMNNI
TRTILFVGRFSSP
```

 Tel: 1-631-559-9269 1-516-512-3133

 Email: info@creative-biomart.com  Fax: 1-631-938-8127

 45-1 Ramsey Road, Shirley, NY 11967, USA

Purity	> 90% as determined by SDS-PAGE.
Notes	Repeated freezing and thawing is not recommended. Store working aliquots at 4 centigrade for up to one week.
Storage	The shelf life is related to many factors, storage state, buffer ingredients, storage temperature and the stability of the protein itself. Generally, the shelf life of liquid form is 6 months at -20 centigrade/-80 centigrade. The shelf life of lyophilized form is 12 months at -20 centigrade/-80 centigrade.
Concentration	A hardcopy of COA with reconstitution instruction is sent along with the products.

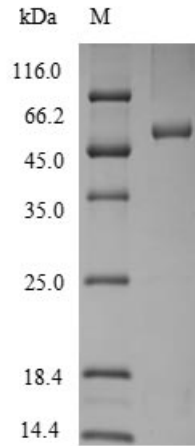
GENE INFORMATION

Gene Name	Serpinb2 serpin peptidase inhibitor, clade B (ovalbumin), member 2 [<i>Rattus norvegicus</i>]
Official Symbol	SERPINB2
Synonyms	SERPINB2; PAI-2; serpin B2; Pai2a;
Gene ID	60325
mRNA Refseq	NM_021696
Protein Refseq	NP_067728
UniProt ID	P29524

 Tel: 1-631-559-9269 1-516-512-3133

 Email: info@creative-biomart.com  Fax: 1-631-938-8127

 45-1 Ramsey Road, Shirley, NY 11967, USA



(Tris-Glycine gel) Discontinuous SDS-PAGE (reduced) with 5% enrichment gel and 15% separation gel.

 Tel: 1-631-559-9269 1-516-512-3133

 Email: info@creative-biomart.com  Fax: 1-631-938-8127

 45-1 Ramsey Road, Shirley, NY 11967, USA