

Recombinant Human SERPINB2 protein, His & T7-tagged

Cat. No. SERPINB2-2748H Lot. No. (See product label)

SPECIFICATION

Product Overview	Recombinant Human SERPINB2 aa. (Asn170~Pro393 (Accession # P05120)) fused with N-terminal His & T7 tag was produced in E. coli cells.
Species	Human
Source	E.coli
ProteinLength	Asn170~Pro393
Form	Freeze-dried powder
Molecular Mass	Predicted Molecular Mass: 29.1kDa
Endotoxin	<1.0EU per 1g (determined by the LAL method)
Purity	>95%
Characteristic	The isoelectric point is 5.8.
Applications	SDS-PAGE; WB; ELISA; IP.
Stability	The thermal stability is described by the loss rate. The loss rate was determined by accelerated thermal degradation test, that is, incubate the protein at 37°C for 48h, and no obvious degradation and precipitation were observed. The loss rate is less than 5% within the expiration date under appropriate storage condition.

 Tel: 1-631-559-9269 1-516-512-3133

 Email: info@creative-biomart.com  Fax: 1-631-938-8127

 45-1 Ramsey Road, Shirley, NY 11967, USA

Storage	Avoid repeated freeze/thaw cycles. Store at 2-8°C for one month. Aliquot and store at -80°C for 12 months.
Storage buffer	Supplied as lyophilized form in PBS, pH7.4, containing 5% sucrose, 0.01% sarcosyl.
Reconstitution	Reconstitute in sterile PBS, pH7.2-pH7.4.

GENE INFORMATION

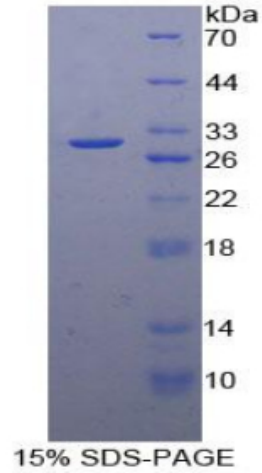
Gene Name	SERPINB2 serpin family B member 2 [Homo sapiens (human)]
Official Symbol	SERPINB2
Synonyms	PAI; PAI2; PAI-2; PLANH2; HsT1201; monocyte Arg-serpin; placental plasminogen activator inhibitor; plasminogen activator inhibitor, type II (arginine-serpin); serine (or cysteine) proteinase inhibitor, clade B (ovalbumin), member 2; serpin B2; serpin peptidase inhibitor, clade B (ovalbumin), member 2; urokinase inhibitor; plasminogen activator inhibitor 2
Gene ID	5055
mRNA Refseq	NM_001143818.1
Protein Refseq	NP_001137290.1
UniProt ID	P05120

 Tel: 1-631-559-9269 1-516-512-3133

 Email: info@creative-biomart.com  Fax: 1-631-938-8127

 45-1 Ramsey Road, Shirley, NY 11967, USA

SDS-PAGE



 Tel: 1-631-559-9269 1-516-512-3133

 Email: info@creative-biomart.com  Fax: 1-631-938-8127

 45-1 Ramsey Road, Shirley, NY 11967, USA