

Active Recombinant Human SERPINB2 protein, GST-tagged

Cat. No. SERPINB2-3071H Lot. No. (See product label)

SPECIFICATION

Product Overview	Active Recombinant Human SERPINB2 protein(NP_002566.1) (Met 1-Pro 415) was expressed in Insect Cells, fused with the GST tag at the N-terminus.
Species	Human
Source	Insect Cells
ProteinLength	1-415 aa
Form	Lyophilized from sterile 50mM Tris, 100mM NaCl, pH 8.0, 0.5mM Reduced Glutathione, 10% glycerol, 0.5mM PMSF.
Bio-activity	Immobilized human GST-SerpinB2 at 10 µg/ml (100 µl/well) can bind biotinylated human uPA-His, The EC50 of biotinylated human uPA-His is 10.24-23.88 ng/ml.
Molecular Mass	The recombinant human SERPINB2/GST chimera consists of 640 amino acids and predicts a molecular mass of 73 kDa. It migrates as an approximately 65 kDa band in SDS-PAGE under reducing conditions.
Endotoxin	< 1.0 EU per µg of the protein as determined by the LAL method.
Purity	> 95 % as determined by SDS-PAGE
Storage	Store it under sterile conditions at -20°C to -80°C upon receiving. Recommend to aliquot the protein into smaller quantities for optimal storage. Avoid repeated freeze-

 Tel: 1-631-559-9269 1-516-512-3133

 Email: info@creative-biomart.com  Fax: 1-631-938-8127

 45-1 Ramsey Road, Shirley, NY 11967, USA

thaw cycles.

Reconstitution

It is recommended that sterile water be added to the vial to prepare a stock solution of 0.2 ug/ul. Centrifuge the vial at 4°C before opening to recover the entire contents.

GENE INFORMATION

Gene Name

SERPINB2 serpin peptidase inhibitor, clade B (ovalbumin), member 2 [Homo sapiens]

Official Symbol

SERPINB2

Synonyms

SERPINB2; serpin peptidase inhibitor, clade B (ovalbumin), member 2; PAI2, PLANH2, serine (or cysteine) proteinase inhibitor, clade B (ovalbumin), member 2; plasminogen activator inhibitor 2; HsT1201; serpin B2; monocyte Arg-serpin; urokinase inhibitor; placental plasminogen activator inhibitor; plasminogen activator inhibitor, type II (arginine-serpin); serine (or cysteine) proteinase inhibitor, clade B (ovalbumin), member 2; PAI; PAI2; PAI-2; PLANH2;

Gene ID

5055

mRNA Refseq

NM_001143818

Protein Refseq

NP_001137290

MIM

173390

UniProt ID

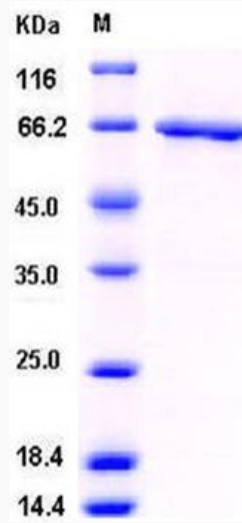
P05120

 Tel: 1-631-559-9269 1-516-512-3133

 Email: info@creative-biomart.com  Fax: 1-631-938-8127

 45-1 Ramsey Road, Shirley, NY 11967, USA

SDS-PAGE



 Tel: 1-631-559-9269 1-516-512-3133

 Email: info@creative-biomart.com  Fax: 1-631-938-8127

 45-1 Ramsey Road, Shirley, NY 11967, USA