

Recombinant Human SERPINB2 Protein, MYC/DDK-tagged, C13 and N15-labeled

Cat. No. SERPINB2-330H Lot. No. (See product label)

SPECIFICATION

Product Overview	SERPINB2 MS Standard C13 and N15-labeled recombinant protein (NP_001137290) with a C-terminal MYC/DDK tag, was expressed in HEK293 cells.
Species	Human
Source	HEK293
Description	Inhibits urokinase-type plasminogen activator. The monocyte derived PAI-2 is distinct from the endothelial cell-derived PAI-1. [UniProtKB/Swiss-Prot Function]
Molecular Mass	46.6 kDa
AA Sequence	MEDLCVANTL FALNLFKHLAKASPTQNLFLSPWSISSTMAMVYMGSRGSTEDQMAK VLQFNEVGANAVTPMTPENFTSCGFMQQIQKGSYPDAILQAQAADKIHSSFRSLSSA INASTGNYLLESVNKLFGEKSASFREYIRLCQKYSSSEPQAVDFLECAEEARKKIYS WVKTKTKGKIPNLLPEGSVDGDMVLVNAVYFKGKWKTPFEKLNGLYPFRVNSA QRTPVQMMYLREKLNIGYIEDLKAQILELPYAGDVSMFLLL PDEIADVSTGLELLESEI TYDKLNKWT SKDKMAEDEVEVYIPQFKLEEHYELRSILRSMGMEDAFNKGRANFSG MSERNDLFLSEVFHQAMVDVNEEGTEAAAGTGGVMTGRTGHGGPQFVADHPFLFL IMHKITNCILFFGRFSSPTRTRPLEQKLISEEDLAANDILDYKDDDDKV
Purity	> 80% as determined by SDS-PAGE and Coomassie blue staining
Stability	Stable for 3 months from receipt of products under proper storage and handling

 Tel: 1-631-559-9269 1-516-512-3133

 Email: info@creative-biomart.com  Fax: 1-631-938-8127

 45-1 Ramsey Road, Shirley, NY 11967, USA

conditions.

Storage Store at -80 centigrade. Avoid repeated freeze-thaw cycles.

Concentration 50 µg/mL as determined by BCA

Storage Buffer 100 mM glycine, 25 mM Tris-HCl, pH 7.3.

GENE INFORMATION

Gene Name SERPINB2 serpin peptidase inhibitor, clade B (ovalbumin), member 2 [Homo sapiens (human)]

Official Symbol SERPINB2

Synonyms SERPINB2; serpin peptidase inhibitor, clade B (ovalbumin), member 2; PAI2, PLANH2, serine (or cysteine) proteinase inhibitor, clade B (ovalbumin), member 2; plasminogen activator inhibitor 2; HsT1201; serpin B2; monocyte Arg-serpin; urokinase inhibitor; placental plasminogen activator inhibitor; plasminogen activator inhibitor, type II (arginine-serpin); serine (or cysteine) proteinase inhibitor, clade B (ovalbumin), member 2; PAI; PAI2; PAI-2; PLANH2;

Gene ID 5055

mRNA Refseq NM_001143818

Protein Refseq NP_001137290

MIM 173390

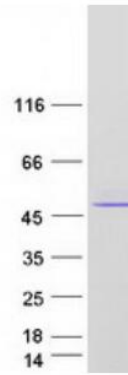
UniProt ID P05120

 Tel: 1-631-559-9269 1-516-512-3133

 Email: info@creative-biomart.com  Fax: 1-631-938-8127

 45-1 Ramsey Road, Shirley, NY 11967, USA

SDS-PAGE



 Tel: 1-631-559-9269 1-516-512-3133

 Email: info@creative-biomart.com  Fax: 1-631-938-8127

 45-1 Ramsey Road, Shirley, NY 11967, USA