

Recombinant Human SERPINB3 Protein, His-tagged

Cat. No. SERPINB3-1225H Lot. No. (See product label)

SPECIFICATION

Product Overview	Recombinant Human SERPINB3 Protein (Met1-Pro390) with His tag was expressed in 293F.
Species	Human
Source	HEK293
ProteinLength	Met1-Pro390
Description	Enables cysteine-type endopeptidase inhibitor activity; protease binding activity; and virus receptor activity. Involved in several processes, including autocrine signaling; paracrine signaling; and regulation of cellular protein metabolic process. Located in cytoplasmic vesicle; extracellular exosome; and nucleus.
Form	Freeze-dried powder
Molecular Mass	Predicted Molecular Mass: 46.1 kDa; Accurate Molecular Mass: 50 kDa
Purity	> 97%
Applications	Positive Control; Immunogen; SDS-PAGE; WB.
Stability	The thermal stability is described by the loss rate. The loss rate was determined by accelerated thermal degradation test, that is, incubate the protein at 37 centigrade for 48h, and no obvious degradation and precipitation were observed. The loss rate is

 Tel: 1-631-559-9269 1-516-512-3133

 Email: info@creative-biomart.com  Fax: 1-631-938-8127

 45-1 Ramsey Road, Shirley, NY 11967, USA

less than 5% within the expiration date under appropriate storage condition.

Storage

Avoid repeated freeze/thaw cycles. Store at 2-8 centigrade for one month. Aliquot and store at -80 centigrade for 12 months.

Storage Buffer

PBS, pH7.4, containing 0.01% SKL, 1mM DTT, 5% Trehalose and Proclin300.

Reconstitution

Reconstitute in 10mM PBS (pH7.4) to a concentration of 0.1-1.0 mg/mL. Do not vortex.

GENE INFORMATION

Gene Name

SERPINB3 serpin peptidase inhibitor, clade B (ovalbumin), member 3 [Homo sapiens (human)]

Official Symbol

SERPINB3

Synonyms

SERPINB3; serpin peptidase inhibitor, clade B (ovalbumin), member 3; SCC, SCCA1, serine (or cysteine) proteinase inhibitor, clade B (ovalbumin), member 3; serpin B3; HsT1196; T4 A; protein T4-A; squamous cell carcinoma antigen 1; serine (or cysteine) proteinase inhibitor, clade B (ovalbumin), member 3; SCC; T4-A; SCCA1; SCCA-1; SCCA-PD;

Gene ID

6317

mRNA Refseq

NM_006919

Protein Refseq

NP_008850

MIM

600517

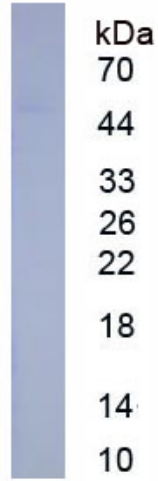
 Tel: 1-631-559-9269 1-516-512-3133

 Email: info@creative-biomart.com  Fax: 1-631-938-8127

 45-1 Ramsey Road, Shirley, NY 11967, USA

UniProt ID

P29508



 Tel: 1-631-559-9269 1-516-512-3133

 Email: info@creative-biomart.com  Fax: 1-631-938-8127

 45-1 Ramsey Road, Shirley, NY 11967, USA