

Recombinant Human SERPINB3 protein, GST-tagged

Cat. No. SERPINB3-2593H Lot. No. (See product label)

SPECIFICATION

Product Overview	Recombinant Human SERPINB3 protein(1-390 aa), fused with N-terminal GST tag, was expressed in E. coli.
Species	Human
Source	E. coli
ProteinLength	1-390 aa
Form	The purified protein was lyophilized from sterile phosphate-buffered saline (PBS: 58 mM Na ₂ HPO ₄ , 17 mM NaH ₂ PO ₄ , 68 mM NaCl, pH 8.0). Prior to lyophilization, 5% (w/v) trehalose and 5% (w/v) mannitol were incorporated as cryoprotective excipients. The protein was eluted with a buffer containing 100 mM reduced glutathione (GSH).
AASequence	MNSLSEANTKFMFDLFQQFRKSKENNIFYSPISITSALGMVLLGAKDNTAQQIKKVLH FDQVTENTTGKAATYHVDRSGNVHHQFQKLLTEFNKSTDAYELKIANKLFGEKTYLF LQEYLDIAIKKFYQTSVESVDFANAPEESRKKINSWVESQTNEKIKNLIPEGNIGSNTTL VLVNAIYFKGQWEKKFNKEDTKEEFKFWPNKNTYKSIQMMRQYTSFHFASLEDVQAK VLEIPYKGDLSMIVLLPNEIDGLQKLEEKLTAEKLMEWTSLQNMRETRVDLHLPRFK VEESYDLKDTLRTMGMVDIFNGDADLSGMTGSRGLVLSGVLHKAFVEVTEEGAEAA AATAVVGFGSSPTSTNEEFHCNHPFLFFIRQNKNTNSILFYGRFSSP
Purity	85%, by SDS-PAGE.

 Tel: 1-631-559-9269 1-516-512-3133

 Email: info@creative-biomart.com  Fax: 1-631-938-8127

 45-1 Ramsey Road, Shirley, NY 11967, USA

Storage Store at 2-8°C for 1-2 weeks. Aliquot and store at -20°C to -80°C for up to 3 months, reconstitution with sterile water and addition of an equal volume of glycerol. Avoid repeat freeze-thaw cycles.

Reconstitution It is recommended that sterile water be added to the vial to prepare a stock solution of 0.25 ug/ul. Centrifuge the vial at 4°C before opening to recover the entire contents.

GENE INFORMATION

Gene Name SERPINB3 serpin peptidase inhibitor, clade B (ovalbumin), member 3 [Homo sapiens]

Official Symbol SERPINB3

Synonyms SERPINB3; serpin peptidase inhibitor, clade B (ovalbumin), member 3; SCC, SCCA1, serine (or cysteine) proteinase inhibitor, clade B (ovalbumin), member 3; serpin B3; HsT1196; T4 A; protein T4-A; squamous cell carcinoma antigen 1; serine (or cysteine) proteinase inhibitor, clade B (ovalbumin), member 3; SCC; T4-A; SCCA1; SCCA-1; SCCA-PD;

mRNA Refseq NM_006919

Protein Refseq NP_008850

MIM 600517

UniProt ID P29508

Gene ID 6317

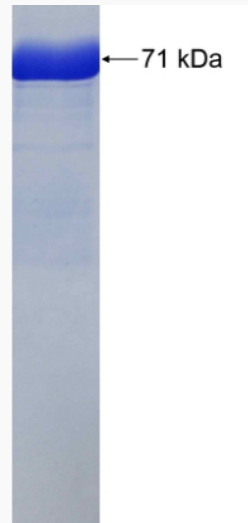
 Tel: 1-631-559-9269 1-516-512-3133

 Email: info@creative-biomart.com  Fax: 1-631-938-8127

 45-1 Ramsey Road, Shirley, NY 11967, USA



SDS-PAGE



Tel: 1-631-559-9269 1-516-512-3133

Email: info@creative-biomart.com Fax: 1-631-938-8127

45-1 Ramsey Road, Shirley, NY 11967, USA