

Recombinant Human SERPINB3 protein

Cat. No. SERPINB3-5477H Lot. No. (See product label)

SPECIFICATION

Product Overview	Recombinant Human SERPINB3protein(P29508)(390aa) was expressed in E. coli.
Species	Human
Source	E.coli
ProteinLength	390aa
Tag	Non
Form	20mM Tris.Cl, 50mM NaCl, 50% Glycerol, pH8.0.
Molecular Mass	44.5kDa
Storage	Store at -80°C and avoid repeated freeze-thaw cycles.
Reconstitution	It is recommended that sterile water be added to the vial to prepare a stock solution of 0.2 ug/ul. Centrifuge the vial at 4°C before opening to recover the entire contents.

GENE INFORMATION

Gene Name	SERPINB3 serpin peptidase inhibitor, clade B (ovalbumin), member 3 [Homo sapiens]
Official Symbol	SERPINB3

 Tel: 1-631-559-9269 1-516-512-3133

 Email: info@creative-biomart.com  Fax: 1-631-938-8127

 45-1 Ramsey Road, Shirley, NY 11967, USA

Synonyms SERPINB3; serpin peptidase inhibitor, clade B (ovalbumin), member 3; SCC, SCCA1, serine (or cysteine) proteinase inhibitor, clade B (ovalbumin), member 3; serpin B3; HsT1196; T4 A; protein T4-A; squamous cell carcinoma antigen 1; serine (or cysteine) proteinase inhibitor, clade B (ovalbumin), member 3; SCC; T4-A; SCCA1; SCCA-1; SCCA-PD;

Gene ID [6317](#)

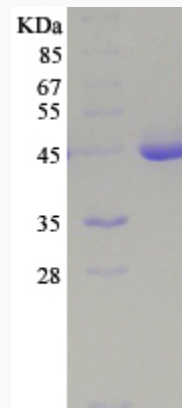
mRNA Refseq [NM_006919](#)

Protein Refseq [NP_008850](#)

MIM [600517](#)

UniProt ID [P29508](#)

SDS-PAGE



 Tel: 1-631-559-9269 1-516-512-3133

 Email: info@creative-biomart.com  Fax: 1-631-938-8127

 45-1 Ramsey Road, Shirley, NY 11967, USA