

Recombinant Human SERPINB3 Protein (Met1-Pro390), N-His tagged

Cat. No. SERPINB3-6237H Lot. No. (See product label)

SPECIFICATION

Product Overview	Recombinant human SERPINB3 (Met1-Pro390) fused with the N-terminal His tag was expressed in E. coli.
Species	Human
Source	E.coli
ProteinLength	Met1-Pro390
Form	Lyophilized powder/frozen liquid
Molecular Mass	42.9 kDa
Purity	> 90 % as determined by SDS-PAGE
Notes	For research use only.
Storage	Use a manual defrost freezer and avoid repeated freeze thaw cycles. Store at 2 to 8 centigrade for one week. Store at -20 to -80 centigrade for twelve months from the date of receipt.
Storage Buffer	Supplied as solution form in PBS or lyophilized from PBS.
Reconstitution	Reconstitute in sterile water for a stock solution.

 Tel: 1-631-559-9269 1-516-512-3133

 Email: info@creative-biomart.com  Fax: 1-631-938-8127

 45-1 Ramsey Road, Shirley, NY 11967, USA

Shipping They are shipped out with dry ice/blue ice unless customers require otherwise.

GENE INFORMATION

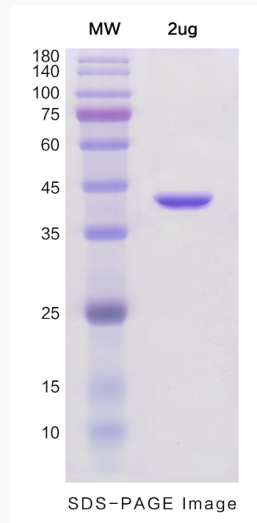
Gene Name	SERPINB3 serpin peptidase inhibitor, clade B (ovalbumin), member 3 [Homo sapiens (human)]
Official Symbol	SERPINB3
Synonyms	SERPINB3; serpin peptidase inhibitor, clade B (ovalbumin), member 3; SCC, SCCA1, serine (or cysteine) proteinase inhibitor, clade B (ovalbumin), member 3; serpin B3; HsT1196; T4 A; protein T4-A; squamous cell carcinoma antigen 1; serine (or cysteine) proteinase inhibitor, clade B (ovalbumin), member 3; SCC; T4-A; SCCA1; SCCA-1; SCCA-PD;
Gene ID	6317
mRNA Refseq	NM_006919
Protein Refseq	NP_008850
MIM	600517
UniProt ID	P29508

 Tel: 1-631-559-9269 1-516-512-3133

 Email: info@creative-biomart.com  Fax: 1-631-938-8127

 45-1 Ramsey Road, Shirley, NY 11967, USA

SDS-PAGE



 Tel: 1-631-559-9269 1-516-512-3133

 Email: info@creative-biomart.com  Fax: 1-631-938-8127

 45-1 Ramsey Road, Shirley, NY 11967, USA