

Recombinant Human SERPINB3 Protein, Myc/DDK-tagged, C13 and N15-labeled

Cat. No. SERPINB3-999H **Lot. No.** (See product label)

SPECIFICATION

Product Overview

SERPINB3 MS Standard C13 and N15-labeled recombinant protein (NP_008850) with a C-terminal MYC/DDK tag, was expressed in HEK293 cells.

Species

Human

Source

HEK293

Description

May act as a papain-like cysteine protease inhibitor to modulate the host immune response against tumor cells. Also functions as an inhibitor of UV-induced apoptosis via suppression of the activity of c-Jun NH(2)-terminal kinase (JNK1).

Molecular Mass

44.6 kDa

AA Sequence

MNSLSEANTKFMFDLFQQFRKSKENNIFYSPISITSALGMVLLGAKDNTAQQIKKVLH
 FDQVTENTTGKAATYHVDRSGNVHHQFQKLLTEFNKSTDAYELKIANKLFGEKTYLF
 LQEYLDIAIKKFYQTSVESVDFANAPEESRKKINSWVESQTNEKIKNLIPEGNIGSNTTL
 VLVNAIYFKGQWEKKFNKEDTKEEFWPNKNTYKSIQMMRQYTSFHFASLEDVQAK
 VLEIPYKGDLSMIVLLPNEIDGLQKLEEKLTAEKLMEWTSLQNMRETRVDLHLPRFK
 VEESYDLKDLRTMGMVDIFNGDADLSGMTGSRGLVLSGVLHKAFFEVEEAGEAA
 AATAVVGFGSSPTSTNEEFHCNHPFLFFIRQNKNTSILFYGRFSSPTRTRPLEQKLIS
 EEDLAANDILDYKDDDDKV

Purity

> 80% as determined by SDS-PAGE and Coomassie blue staining

 Tel: 1-631-559-9269 1-516-512-3133

 Email: info@creative-biomart.com  Fax: 1-631-938-8127

 45-1 Ramsey Road, Shirley, NY 11967, USA

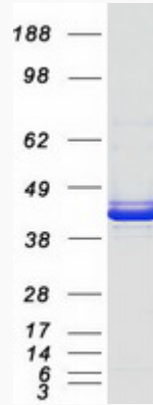
Stability	Stable for 3 months from receipt of products under proper storage and handling conditions.
Storage	Store at -80 centigrade. Avoid repeated freeze-thaw cycles.
Concentration	50 µg/mL as determined by BCA
Storage Buffer	100 mM glycine, 25 mM Tris-HCl, pH 7.3.
GENE INFORMATION	
Gene Name	SERPINB3 serpin family B member 3 [Homo sapiens (human)]
Official Symbol	SERPINB3
Synonyms	SERPINB3; serpin peptidase inhibitor, clade B (ovalbumin), member 3; SCC, SCCA1, serine (or cysteine) proteinase inhibitor, clade B (ovalbumin), member 3; serpin B3; HsT1196; T4 A; protein T4-A; squamous cell carcinoma antigen 1; serine (or cysteine) proteinase inhibitor, clade B (ovalbumin), member 3; SCC; T4-A; SCCA1; SCCA-1; SCCA-PD;
Gene ID	6317
mRNA Refseq	NM_006919
Protein Refseq	NP_008850
MIM	600517
UniProt ID	P29508

 Tel: 1-631-559-9269 1-516-512-3133

 Email: info@creative-biomart.com  Fax: 1-631-938-8127

 45-1 Ramsey Road, Shirley, NY 11967, USA

SDS-PAGE



 Tel: 1-631-559-9269 1-516-512-3133

 Email: info@creative-biomart.com  Fax: 1-631-938-8127

 45-1 Ramsey Road, Shirley, NY 11967, USA