

## Recombinant Human SERPINB4 Protein, His-tagged

Cat. No. SERPINB4-130H Lot. No. (See product label)

### SPECIFICATION

<b>Product Overview</b>	Recombinant Human SERPINB4(Ser320~Pro390) fused with His tag at N-terminal was expressed in E. coli.
<b>Species</b>	Human
<b>Source</b>	E.coli
<b>ProteinLength</b>	Ser320~Pro390
<b>Description</b>	The protein encoded by this gene is a member of the serpin family of serine protease inhibitors. The encoded protein is highly expressed in many tumor cells and can inactivate granzyme M, an enzyme that kills tumor cells. This protein, along with serpin B3, can be processed into smaller fragments that aggregate to form an autoantigen in psoriasis, probably by causing chronic inflammation.
<b>Form</b>	PBS, pH7.4, containing 0.01% SKL, 1mM DTT, 5% Trehalose and Proclin300.
<b>Molecular Mass</b>	9.3kDa
<b>Identity</b>	Reconstitute in PBS (pH7.4) to a concentration of 0.1-1.0 mg/mL. Do not vortex.
<b>Endotoxin</b>	<1.0EU per 1g (determined by the LAL method)
<b>Purity</b>	> 95%

 Tel: 1-631-559-9269 1-516-512-3133

 Email: [info@creative-biomart.com](mailto:info@creative-biomart.com)  Fax: 1-631-938-8127

 45-1 Ramsey Road, Shirley, NY 11967, USA

<b>Applications</b>	Positive Control; Immunogen; SDS-PAGE; WB. If bio-activity of the protein is needed, please check active protein
<b>Stability</b>	The thermal stability is described by the loss rate. The loss rate was determined by accelerated thermal degradation test, that is, incubate the protein at 37 centigrade for 48h, and no obvious degradation and precipitation were observed. The loss rate is less than 5% within the expiration date under appropriate storage condition.
<b>Storage</b>	Avoid repeated freeze/thaw cycles. Store at 2-8 centigrade for one month. Aliquot and store at -80 centigrade for 12 months.
<b>Reconstitution</b>	Reconstitute in PBS or others
<b>GENE INFORMATION</b>	
<b>Gene Name</b>	SERPINB4 serpin peptidase inhibitor, clade B (ovalbumin), member 4 [ Homo sapiens ]
<b>Official Symbol</b>	SERPINB4
<b>Synonyms</b>	SERPINB4; serpin peptidase inhibitor, clade B (ovalbumin), member 4; SCCA2, serine (or cysteine) proteinase inhibitor, clade B (ovalbumin), member 4; serpin B4; LEUPIN; PI11; SCCA 2; SCCA1; squamous cell carcinoma antigen 2; PI-11; peptidase inhibitor 11; SCCA2/SCCA1 fusion protein; squamous cell carcinoma antigen 1; protease inhibitor (leucine-serpin); serine (or cysteine) proteinase inhibitor, clade B (ovalbumin), member 4; SCCA2; SCCA-2;
<b>Gene ID</b>	6318
<b>mRNA Refseq</b>	NM_002974

 Tel: 1-631-559-9269 1-516-512-3133

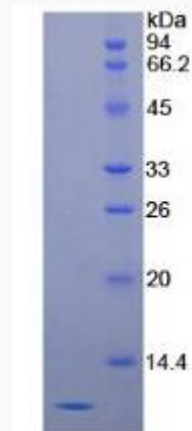
 Email: [info@creative-biomart.com](mailto:info@creative-biomart.com)  Fax: 1-631-938-8127

 45-1 Ramsey Road, Shirley, NY 11967, USA

**Protein Refseq** NP\_002965

**MIM** 600518

**UniProt ID** P48594



 Tel: 1-631-559-9269 1-516-512-3133

 Email: [info@creative-biomart.com](mailto:info@creative-biomart.com)  Fax: 1-631-938-8127

 45-1 Ramsey Road, Shirley, NY 11967, USA