

Recombinant Human SERPINB4 protein, His-tagged

Cat. No. SERPINB4-1763H Lot. No. (See product label)

SPECIFICATION

Product Overview	Recombinant Human SERPINB4 aa. (Arg144~Thr298) fused with N-terminal His tag was produced in E. coli cells.
Species	Human
Source	E.coli
ProteinLength	Arg144~Thr298
Description	The protein encoded by this gene is a member of the serpin family of serine protease inhibitors. The encoded protein is highly expressed in many tumor cells and can inactivate granzyme M, an enzyme that kills tumor cells. This protein, along with serpin B3, can be processed into smaller fragments that aggregate to form an autoantigen in psoriasis, probably by causing chronic inflammation.
Form	Freeze-dried powder
Molecular Mass	22kDa as determined by SDS-PAGE reducing conditions.
Endotoxin	<1.0EU per 1ug (determined by the LAL method)
Purity	>95%
Applications	SDS-PAGE; WB; ELISA; IP; CoIP; Purification; Amine Reactive Labeling.

 Tel: 1-631-559-9269 1-516-512-3133

 Email: info@creative-biomart.com  Fax: 1-631-938-8127

 45-1 Ramsey Road, Shirley, NY 11967, USA

Stability	The thermal stability is described by the loss rate. The loss rate was determined by accelerated thermal degradation test, that is, incubate the protein at 37°C for 48h, and no obvious degradation and precipitation were observed. The loss rate is less than 5% within the expiration date under appropriate storage condition.
Storage	Avoid repeated freeze/thaw cycles. Store at 2-8°C for one month. Aliquot and store at -80°C for 12 months.
Concentration	200µg/mL
Storage buffer	20mM Tris, 150mM NaCl, pH8.0, containing 1mM EDTA, 1mM DTT, 0.01% sarcosyl, 5%Trehalose and Proclin300.
Reconstitution	Reconstitute in 20mM Tris, 150mM NaCl (pH8.0) to a concentration of 0.1-1.0 mg/mL. Do not vortex.
Isoelectric Point	6.8

GENE INFORMATION

Gene Name	SERPINB4 serpin family B member 4 [Homo sapiens (human)]
Official Symbol	SERPINB4
Synonyms	SERPINB4; serpin family B member 4; PI11; SCCA1; SCCA2; LEUPIN; SCCA-2; serpin B4; SCCA2/SCCA1 fusion protein; peptidase inhibitor 11; protease inhibitor (leucine-serpin); serine (or cysteine) proteinase inhibitor, clade B (ovalbumin), member 4; serpin peptidase inhibitor, clade B (ovalbumin), member 4; squamous cell carcinoma antigen 1; squamous cell carcinoma antigen 2
Gene ID	6318

 Tel: 1-631-559-9269 1-516-512-3133

 Email: info@creative-biomart.com  Fax: 1-631-938-8127

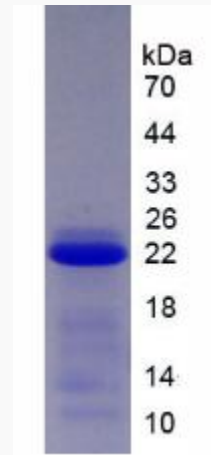
 45-1 Ramsey Road, Shirley, NY 11967, USA

mRNA Refseq [NM_002974.3](#)

Protein Refseq [NP_002965.1](#)

UniProt ID [P48594](#)

SDS-PAGE



 Tel: 1-631-559-9269 1-516-512-3133

 Email: info@creative-biomart.com  Fax: 1-631-938-8127

 45-1 Ramsey Road, Shirley, NY 11967, USA