

Recombinant Human SERPINB4 protein, His & T7-tagged

Cat. No. SERPINB4-1834H Lot. No. (See product label)

SPECIFICATION

Product Overview	Recombinant Human SERPINB4 aa. (Leu38~Gln215) fused with N-terminal His & T7 tag was produced in E. coli cells.
Species	Human
Source	E.coli
ProteinLength	Leu38~Gln215
Description	The protein encoded by this gene is a member of the serpin family of serine protease inhibitors. The encoded protein is highly expressed in many tumor cells and can inactivate granzyme M, an enzyme that kills tumor cells. This protein, along with serpin B3, can be processed into smaller fragments that aggregate to form an autoantigen in psoriasis, probably by causing chronic inflammation.
Form	Freeze-dried powder
Molecular Mass	Predicted Molecular Mass: 24.4kDa.
Endotoxin	<1.0EU per 1ug (determined by the LAL method)
Purity	>95%
Characteristic	The isoelectric point is 9.1.

 Tel: 1-631-559-9269 1-516-512-3133

 Email: info@creative-biomart.com  Fax: 1-631-938-8127

 45-1 Ramsey Road, Shirley, NY 11967, USA

Applications	SDS-PAGE; WB; ELISA; IP.
Stability	The thermal stability is described by the loss rate of the target protein. The loss rate was determined by accelerated thermal degradation test, that is, incubate the protein at 37°C for 48h, and no obvious degradation and precipitation were observed. (Referring from China Biological Products Standard, which was calculated by the Arrhenius equation.) The loss of this protein is less than 5% within the expiration date under appropriate storage condition.
Storage	Avoid repeated freeze/thaw cycles. Store at 2-8°C for one month. Aliquot and store at -80°C for 12 months.
Storage Buffer	Supplied as lyophilized form in 20mM Tris, 150mM NaCl, pH8.0, containing 1mM EDTA, 1mM DTT, 0.01% sarcosyl, 5% trehalose, and preservative.
Reconstitution	Reconstitute in sterile ddH2O.

GENE INFORMATION

Gene Name	SERPINB4 serpin family B member 4 [Homo sapiens (human)]
Official Symbol	SERPINB4
Synonyms	TSHB; thyrotropin subunit beta; TSH-B; TSH-beta; thyroid-stimulating hormone subunit beta; thyrotropin beta chain
Gene ID	6318
mRNA Refseq	NM_002974.3
Protein Refseq	NP_002965.1

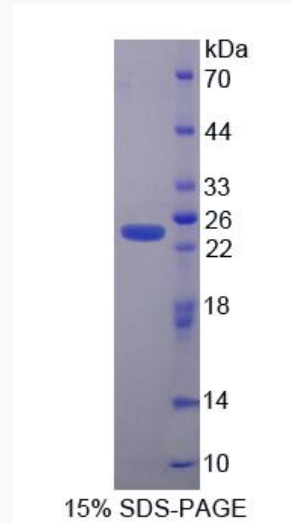
 Tel: 1-631-559-9269 1-516-512-3133

 Email: info@creative-biomart.com  Fax: 1-631-938-8127

 45-1 Ramsey Road, Shirley, NY 11967, USA

UniProt ID

P48594



SDS-PAGE

 Tel: 1-631-559-9269 1-516-512-3133

 Email: info@creative-biomart.com  Fax: 1-631-938-8127

 45-1 Ramsey Road, Shirley, NY 11967, USA