

Recombinant Human SERPINB4 Protein, His-tagged

Cat. No. SERPINB4-211H Lot. No. (See product label)

SPECIFICATION

Product Overview	Biotinylated Recombinant Human Serpin B3 is produced by E.coli. The target gene encoding M1- P390 is expressed with a 6His tag at the C terminus.
Species	Human
Source	Human Cells
Description	<p>Serpin B3, also known as squamous cell carcinoma antigen-1 (SCCA-1), is a member of the serpin superfamily of serine protease inhibitors. Serpins are known to inhibit serine proteases and some can inhibit caspases and papain-like cysteine proteases. Serpin B3 is also a member of the subgroup ovalbumin-related serpins which takes part in the regulation of apoptosis, inflammation, angiogenesis and embryogenesis. Serpin B3 is also a tumor marker for squamous cell carcinomas in diverse areas including the cervix, head, neck and lung. Different from typical serpins, serpin B3 inhibits papain-like lysosomal cysteine proteases Cathepsin K, L, and S, while lacking inhibitory activity against serine proteases.</p>
Form	Lyophilized from a 0.2 um filtered solution of 2umM Na ₂ HPO ₄ , 2umM NaH ₂ PO ₄ , pH7.4.
Molecular Mass	<p>Predicted Molecular Weight: 48.1kDa Apparent Molecular Weight: SCCA-1 protein appeared at 47kDa in a reducing SDS-PAGE gel.</p>
AA Sequence	M1-P390

 Tel: 1-631-559-9269 1-516-512-3133

 Email: info@creative-biomart.com  Fax: 1-631-938-8127

 45-1 Ramsey Road, Shirley, NY 11967, USA

Endotoxin	Less than 0.1 ng/ug (1 EU/ug).
Purity	>95%
Storage	<p>Lyophilized protein should be stored at < -20 centigrade, though stable at room temperature for 3 weeks.</p> <p>Reconstituted protein solution can be stored at 4-7 centigrade for 2-7 days. Aliquots of reconstituted samples are stable at < -20 centigrade for 3 months.</p> <p>Always centrifuge tubes before opening. Do not mix by vortex or pipetting.</p>
Reconstitution	<p>It is not recommended to reconstitute to a concentration less than 100µg/ml.</p> <p>Dissolve the lyophilized protein in distilled water.</p> <p>Please aliquot the reconstituted solution to minimize freeze-thaw cycles.</p>
Quality Statement	Purity: greater than 95% as determined by reducing SDS-PAGE.
Shipping	<p>The product is shipped on dry ice pack.</p> <p>Upon receipt, store it immediately at the temperature listed below.</p>

GENE INFORMATION

Gene Name	SERPINB4 serpin family B member 4 [Homo sapiens (human)]
Official Symbol	SERPINB4
Synonyms	Serpin B3; Protein T4-A; Squamous cell carcinoma antigen 1; SCCA-1; Squamous cell carcinoma antigen 1; T4-A; PI11; SCCA1; SCCA2; LEUPIN; SCCA-2
Gene ID	6318
mRNA Refseq	NM_002974.4

 Tel: 1-631-559-9269 1-516-512-3133

 Email: info@creative-biomart.com  Fax: 1-631-938-8127

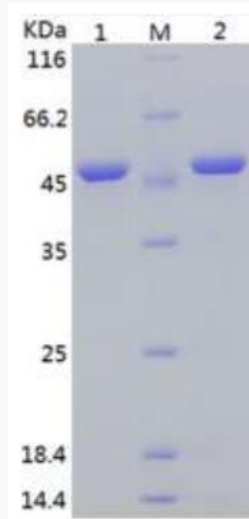
 45-1 Ramsey Road, Shirley, NY 11967, USA

Protein Refseq NP_002965.1

MIM 600518

UniProt ID P29508

SDS-PAGE



 Tel: 1-631-559-9269 1-516-512-3133

 Email: info@creative-biomart.com  Fax: 1-631-938-8127

 45-1 Ramsey Road, Shirley, NY 11967, USA