

Recombinant Human SERPINB4 Protein, Myc/DDK-tagged, C13 and N15-labeled

Cat. No. SERPINB4-4652H **Lot. No.** (See product label)

SPECIFICATION

Product Overview

SERPINB4 MS Standard C13 and N15-labeled recombinant protein (NP_002965) with a C-terminal MYC/DDK tag, was expressed in HEK293 cells.

Species

Human

Source

HEK293

Description

The protein encoded by this gene is a member of the serpin family of serine protease inhibitors. The encoded protein is highly expressed in many tumor cells and can inactivate granzyme M, an enzyme that kills tumor cells. This protein, along with serpin B3, can be processed into smaller fragments that aggregate to form an autoantigen in psoriasis, probably by causing chronic inflammation.

Molecular Mass

44.9 kDa

AA Sequence

MNSLSEANTKFMFDLFQQFRKSKENNIFYSPISITSALGMVLLGAKDNTAQQISKVLH
 FDQVTENTTEKAATYHVDRSGNVHHQFQKLLTEFNKSTDAYELKIANKLFGKTYQF
 LQEYLDAIKKFYQTSVESTDFANAPEESRKKINSWVESQTNEKIKNLFPDGTIGNDTT
 LVLVNAIYFKGQWENKFKKENTKEEFWPNKNTYKSVQMMRQYNSFNFALLEDVQ
 AKVLEIPYKGDLSMIVLLPNEIDGLQKLEEKLTAEKLMEWTSLQNMRETCVDLHLPR
 FKMEESYDLKDTLRMTGMVNIFNGDADLSGMTWSHGLSVSKVLHKAFVEVTEEGVE
 AAAATAVVVVVELSSPSTNEEFCCNHPFLFFIRQNKTNLSILFYGRFSSPTRTRPLEQKLI
 SEEDLAANDILDYKDDDDKV

 Tel: 1-631-559-9269 1-516-512-3133

 Email: info@creative-biomart.com  Fax: 1-631-938-8127

 45-1 Ramsey Road, Shirley, NY 11967, USA

Purity	> 80% as determined by SDS-PAGE and Coomassie blue staining
Stability	Stable for 3 months from receipt of products under proper storage and handling conditions.
Storage	Store at -80 centigrade. Avoid repeated freeze-thaw cycles.
Concentration	50 µg/mL as determined by BCA
Storage Buffer	100 mM glycine, 25 mM Tris-HCl, pH 7.3.

GENE INFORMATION

Gene Name	SERPINB4 serpin family B member 4 [Homo sapiens (human)]
Official Symbol	SERPINB4
Synonyms	SERPINB4; serpin peptidase inhibitor, clade B (ovalbumin), member 4; SCCA2, serine (or cysteine) proteinase inhibitor, clade B (ovalbumin), member 4; serpin B4; LEUPIN; PI11; SCCA 2; SCCA1; squamous cell carcinoma antigen 2; PI-11; peptidase inhibitor 11; SCCA2/SCCA1 fusion protein; squamous cell carcinoma antigen 1; protease inhibitor (leucine-serpin); serine (or cysteine) proteinase inhibitor, clade B (ovalbumin), member 4; SCCA2; SCCA-2;
Gene ID	6318
mRNA Refseq	NM_002974
Protein Refseq	NP_002965
MIM	600518

 Tel: 1-631-559-9269 1-516-512-3133

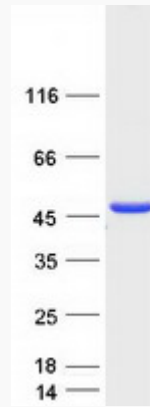
 Email: info@creative-biomart.com  Fax: 1-631-938-8127

 45-1 Ramsey Road, Shirley, NY 11967, USA

UniProt ID

P48594

SDS-PAGE



 Tel: 1-631-559-9269 1-516-512-3133

 Email: info@creative-biomart.com  Fax: 1-631-938-8127

 45-1 Ramsey Road, Shirley, NY 11967, USA