

Recombinant Human SERPINB5 protein, His-sumostar-tagged

Cat. No. SERPINB5-4697H Lot. No. (See product label)

SPECIFICATION

Product Overview	Recombinant Human SERPINB5 protein(P36952)(1-375 aa), fused with N-terminal His and sumostar tag, was expressed in Yeast.
Species	Human
Source	Yeast
ProteinLength	1-375 aa
Form	For liquid formulations, the standard storage buffer consists of a Tris or PBS based solution supplemented with 5-50% glycerol. When provided as lyophilized powder, the product undergoes freeze-drying from a Tris- or PBS-based formulation containing 6% trehalose, adjusted to pH 8.0 prior to the lyophilization process.
Molecular Mass	55.2 kDa
AASequence	MDALQLANSFAVDLFDKQLCEKEPLGNVLFSPICLSTSLSLAQVGAKGDTANEIGQVL HFENVKDVPFGFQTVTSDVNKLSSFYSLKLIKRLYVDKSLNLSTEFISSTKRPYAKELE TVDFKDKLEETKGQINNSIKDLTDGHFENILADNSVNDQTKILVVNAAYFVGKWMKKF SESETKECPFRVNKTDTKPVQMMNMEATFCMGNIDSINCKIIELPFQNKHLMSFILLP KDVEDESTGLEKIEKQLNSESLSQWTNPSTMANAKVKLSIPKFKVEKMIDPKACLENL GLKHIFSEDTSDFSGMSETKGVALSNIHKVCLEITEDGGDSIEVPGARILQHKDELN ADHPFIYIIRHNKTRNIFFGKFCSP
Purity	Greater than 95% as determined by SDS-PAGE.

 Tel: 1-631-559-9269 1-516-512-3133

 Email: info@creative-biomart.com  Fax: 1-631-938-8127

 45-1 Ramsey Road, Shirley, NY 11967, USA

Storage Store at -20°C/-80°C upon receipt, aliquoting is necessary for mutiple use. Avoid repeated freeze-thaw cycles.

Reconstitution Please reconstitute protein indeionized sterile water to a concentration of 0.1-1.0 mg/mL. Aliquot for long-term storage at -80°C.

GENE INFORMATION

Gene Name SERPINB5 serpin peptidase inhibitor, clade B (ovalbumin), member 5 [Homo sapiens]

Official Symbol SERPINB5

Synonyms SERPINB5; serpin peptidase inhibitor, clade B (ovalbumin), member 5; PI5, serine (or cysteine) proteinase inhibitor, clade B (ovalbumin), member 5; serpin B5; maspin; protease inhibitor 5 (maspin); PI-5; peptidase inhibitor 5; serine (or cysteine) proteinase inhibitor, clade B (ovalbumin), member 5; PI5;

Gene ID 5268

mRNA Refseq NM_002639

Protein Refseq NP_002630

MIM 154790

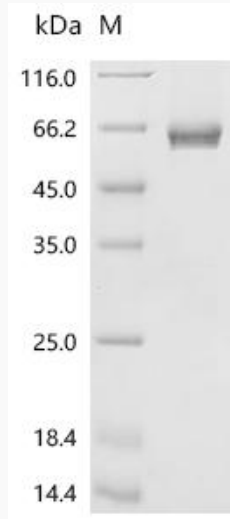
UniProt ID P36952

 Tel: 1-631-559-9269 1-516-512-3133

 Email: info@creative-biomart.com  Fax: 1-631-938-8127

 45-1 Ramsey Road, Shirley, NY 11967, USA

SDS-PAGE



 Tel: 1-631-559-9269 1-516-512-3133

 Email: info@creative-biomart.com  Fax: 1-631-938-8127

 45-1 Ramsey Road, Shirley, NY 11967, USA