

# Recombinant Human SERPINB6 Protein, Myc/DDK-tagged, C13 and N15-labeled

**Cat. No.** SERPINB6-1071H    **Lot. No.** (See product label)

## SPECIFICATION

### Product Overview

SERPINB6 MS Standard C13 and N15-labeled recombinant protein (NP\_004559) with a C-terminal MYC/DDK tag, was expressed in HEK293 cells.

### Species

Human

### Source

HEK293

### Description

The protein encoded by this gene is a member of the serpin (serine proteinase inhibitor) superfamily, and ovalbumin(ov)-serpin subfamily. It was originally discovered as a placental thrombin inhibitor. The mouse homolog was found to be expressed in the hair cells of the inner ear. Mutations in this gene are associated with nonsyndromic progressive hearing loss, suggesting that this serpin plays an important role in the inner ear in the protection against leakage of lysosomal content during stress, and that loss of this protection results in cell death and sensorineural hearing loss. Alternatively spliced transcript variants have been found for this gene.

### Molecular Mass

42.4 kDa

### AA Sequence

MDVLAEANGTFALNLLKTLGKDNSKNVFFSPMSMSCALAMVYMGAKGNTAAQMAQ  
ILSFNKSGGGGDIHQGFQSLLEVNKTGTQYLLRMANRLFGEKSCDFLSSFRDSCQ  
KFYQAEMEELDFISAVEKSRKHINTWVAEKTEGKIAELLSPGSVDPLTRLVLVNAVYF  
RGNWDEQFDKENTEERLFKVSKEEKPVQMMFKQSTFKKTYIGEIFTQILVLPYVVK  
ELNMIIMLPDETTDLRTVEKELTYEFVWTRLDMMDEEEVEVSLPRFKLEESYDME

 Tel: 1-631-559-9269    1-516-512-3133

 Email: [info@creative-biomart.com](mailto:info@creative-biomart.com)     Fax: 1-631-938-8127

 45-1 Ramsey Road, Shirley, NY 11967, USA

SVLRNLGMTDAFELGKADFGMSQTDLSLSKVVHKSFVEVN EEGTEAAAATAAIMM  
 MRCARFVPRFCADHPFLFFIQHSKTNGILFCGRFSSPTRTRPLEQKLISEEDLAANDI  
 LDYKDDDDKV

**Purity** > 80% as determined by SDS-PAGE and Coomassie blue staining

**Stability** Stable for 3 months from receipt of products under proper storage and handling conditions.

**Storage** Store at -80 centigrade. Avoid repeated freeze-thaw cycles.

**Concentration** 50 µg/mL as determined by BCA

**Storage Buffer** 100 mM glycine, 25 mM Tris-HCl, pH 7.3.

## GENE INFORMATION

**Gene Name** SERPINB6 serpin family B member 6 [ Homo sapiens (human) ]

**Official Symbol** SERPINB6

**Synonyms** SERPINB6; serpin peptidase inhibitor, clade B (ovalbumin), member 6; deafness, autosomal recessive 91, DFNB91, PI6, serine (or cysteine) proteinase inhibitor, clade B (ovalbumin), member 6; serpin B6; CAP; cytoplasmic antiproteinase; PTI; PI-6; protease inhibitor 6 (placental thrombin inhibitor); serine (or cysteine) proteinase inhibitor, clade B (ovalbumin), member 6; PI6; SPI3; DFNB91; MSTP057; MGC111370; DKFZp686I04222;

**Gene ID** 5269

**mRNA Refseq** NM\_004568

 Tel: 1-631-559-9269 1-516-512-3133

 Email: [info@creative-biomart.com](mailto:info@creative-biomart.com)  Fax: 1-631-938-8127

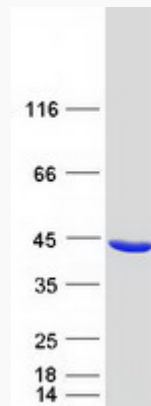
 45-1 Ramsey Road, Shirley, NY 11967, USA

**Protein Refseq** NP\_004559

**MIM** 173321

**UniProt ID** P35237

**SDS-PAGE**



 Tel: 1-631-559-9269 1-516-512-3133

 Email: [info@creative-biomart.com](mailto:info@creative-biomart.com)  Fax: 1-631-938-8127

 45-1 Ramsey Road, Shirley, NY 11967, USA