

## Recombinant Human SERPINB6 Protein (Met1-Pro376), N-His and Trx tagged

Cat. No. SERPINB6-5915H Lot. No. (See product label)

### SPECIFICATION

<b>Product Overview</b>	Recombinant human SERPINB6 (Met1-Pro376) fused with the N-terminal His and Trx tag was expressed in E. coli.
<b>Species</b>	Human
<b>Source</b>	E.coli
<b>ProteinLength</b>	Met1-Pro376
<b>Form</b>	Lyophilized powder/frozen liquid
<b>Molecular Mass</b>	41.36 kDa
<b>Purity</b>	> 90 % as determined by SDS-PAGE
<b>Notes</b>	For research use only.
<b>Storage</b>	Use a manual defrost freezer and avoid repeated freeze thaw cycles. Store at 2 to 8 centigrade for one week. Store at -20 to -80 centigrade for twelve months from the date of receipt.
<b>Storage Buffer</b>	Supplied as solution form in PBS or lyophilized from PBS.
<b>Reconstitution</b>	Reconstitute in sterile water for a stock solution.

 Tel: 1-631-559-9269 1-516-512-3133

 Email: [info@creative-biomart.com](mailto:info@creative-biomart.com)  Fax: 1-631-938-8127

 45-1 Ramsey Road, Shirley, NY 11967, USA

**Shipping** They are shipped out with dry ice/blue ice unless customers require otherwise.

## GENE INFORMATION

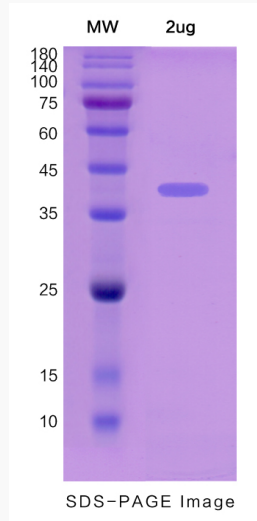
<b>Gene Name</b>	SERPINB6 serpin peptidase inhibitor, clade B (ovalbumin), member 6 [ Homo sapiens (human) ]
<b>Official Symbol</b>	SERPINB6
<b>Synonyms</b>	SERPINB6; serpin peptidase inhibitor, clade B (ovalbumin), member 6; deafness, autosomal recessive 91, DFNB91, PI6, serine (or cysteine) proteinase inhibitor, clade B (ovalbumin), member 6; serpin B6; CAP; cytoplasmic antiproteinase; PTI; PI-6; protease inhibitor 6 (placental thrombin inhibitor); serine (or cysteine) proteinase inhibitor, clade B (ovalbumin), member 6; PI6; SPI3; DFNB91; MSTP057; MGC111370; DKFZp686I04222;
<b>Gene ID</b>	5269
<b>mRNA Refseq</b>	NM_001195291
<b>Protein Refseq</b>	NP_001182220
<b>MIM</b>	173321
<b>UniProt ID</b>	P35237

 Tel: 1-631-559-9269 1-516-512-3133

 Email: [info@creative-biomart.com](mailto:info@creative-biomart.com)  Fax: 1-631-938-8127

 45-1 Ramsey Road, Shirley, NY 11967, USA

**SDS-PAGE**



 Tel: 1-631-559-9269 1-516-512-3133

 Email: [info@creative-biomart.com](mailto:info@creative-biomart.com)  Fax: 1-631-938-8127

 45-1 Ramsey Road, Shirley, NY 11967, USA