

Recombinant Human SERPINB8 Protein, Myc/DDK-tagged, C13 and N15-labeled

Cat. No. SERPINB8-2250H **Lot. No.** (See product label)

SPECIFICATION

Product Overview	SERPINB8 MS Standard C13 and N15-labeled recombinant protein (NP_001027018) with a C-terminal MYC/DDK tag, was expressed in HEK293 cells.
Species	Human
Source	HEK293
Description	The protein encoded by this gene is a member of the ov-serpin family of serine protease inhibitors. The encoded protein is produced by platelets and can bind to and inhibit the function of furin, a serine protease involved in platelet functions. In addition, this protein has been found to enhance the mechanical stability of cell-cell adhesion in the skin, and defects in this gene have been associated with an autosomal-recessive form of exfoliative ichthyosis.
Molecular Mass	27.7 kDa
AA Sequence	MDDLCEANGTFAISLFKILGEEDNSRNVFFSPMSISSALAMVFMGAKGSTAAQMSQA LCLYKDGDIHRGFQSLLEVNRTGTQYLLRTANRLFGEKTCDFLPDFKEYCQKQFYQA ELEELSFAEDTEECRKHINDWVAEKTEGKISEVLDAGTVDPLTKLVLVNAIYFKGKWN EQFDRKYTRGMLFKTNEEKKTVMQMMFKEAKFKMGYADEVHTQVLELPYVEEELSM VILLPDDNTDLAVKETRTRPLEQKLISEEDLAANDILDYKDDDDKV
Purity	> 80% as determined by SDS-PAGE and Coomassie blue staining

 Tel: 1-631-559-9269 1-516-512-3133

 Email: info@creative-biomart.com  Fax: 1-631-938-8127

 45-1 Ramsey Road, Shirley, NY 11967, USA

Stability	Stable for 3 months from receipt of products under proper storage and handling conditions.
Storage	Store at -80 centigrade. Avoid repeated freeze-thaw cycles.
Concentration	50 µg/mL as determined by BCA
Storage Buffer	100 mM glycine, 25 mM Tris-HCl, pH 7.3.

GENE INFORMATION

Gene Name	SERPINB8 serpin family B member 8 [Homo sapiens (human)]
Official Symbol	SERPINB8
Synonyms	SERPINB8; serpin peptidase inhibitor, clade B (ovalbumin), member 8; PI8, serine (or cysteine) proteinase inhibitor, clade B (ovalbumin), member 8; serpin B8; CAP2; cytoplasmic antiproteinase 2; PI-8; peptidase inhibitor 8; protease inhibitor 8 (ovalbumin type); serine (or cysteine) proteinase inhibitor, clade B (ovalbumin), member 8; PI8;
Gene ID	5271
mRNA Refseq	NM_001031848
Protein Refseq	NP_001027018
MIM	601697
UniProt ID	P50452

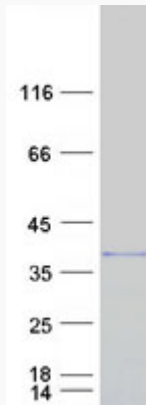
 Tel: 1-631-559-9269 1-516-512-3133

 Email: info@creative-biomart.com  Fax: 1-631-938-8127

 45-1 Ramsey Road, Shirley, NY 11967, USA



SDS-PAGE



Tel: 1-631-559-9269 1-516-512-3133

Email: info@creative-biomart.com Fax: 1-631-938-8127

45-1 Ramsey Road, Shirley, NY 11967, USA