

# Recombinant Human SERPINB9 Protein, Myc/DDK-tagged, C13 and N15-labeled

**Cat. No.** SERPINB9-3445H    **Lot. No.** (See product label)

## SPECIFICATION

### Product Overview

SERPINB9 MS Standard C13 and N15-labeled recombinant protein (NP\_004146) with a C-terminal MYC/DDK tag, was expressed in HEK293 cells.

### Species

Human

### Source

HEK293

### Description

This gene encodes a member of the serine protease inhibitor family which are also known as serpins. The encoded protein belongs to a subfamily of intracellular serpins. This protein inhibits the activity of the effector molecule granzyme B. Overexpression of this protein may prevent cytotoxic T-lymphocytes from eliminating certain tumor cells. A pseudogene of this gene is found on chromosome 6.

### Molecular Mass

42.4 kDa

### AA Sequence

METLSNASGTFAIRLLKILCQDNPSHNVFCSPVSISSALAMVLLGAKGNTATQMAQAL  
 SLNTEEDIHRAFQSLLTEVKNAGTQYLLRTANRLFGEKTCQFLSTFKESCLQFYHAEL  
 KELSFIRAAEE SRKHINTWVSKKTEGKIEELLPGSSIDAETRLVLVNAIYFKGKWNEPF  
 DETYTREMPFKINQEEQRPVQMMYQEATFKLAHVGEVRAQLLELPYARKELSLLVLL  
 PDDGVELSTVEKSLTFEKLTAWTKPDCMKSTEVEVLLPKFKLQEDYDMESVLRHLGI  
 VDAFQQGKADLSAMSAERDLCLSKFVHKSFVEVNEEGTEAAAASSCFVVAECCME  
 SGPRFCADHPFLFFIRHNRANSILFCGRFSSPTRTRTRPLEQKLISEEDLAANDILDYKD  
 DDDKV

 Tel: 1-631-559-9269    1-516-512-3133

 Email: [info@creative-biomart.com](mailto:info@creative-biomart.com)     Fax: 1-631-938-8127

 45-1 Ramsey Road, Shirley, NY 11967, USA

|                       |  |
|-----------------------|--|
| <b>Purity</b>         | > 80% as determined by SDS-PAGE and Coomassie blue staining                                |
| <b>Stability</b>      | Stable for 3 months from receipt of products under proper storage and handling conditions. |
| <b>Storage</b>        | Store at -80 centigrade. Avoid repeated freeze-thaw cycles.                                |
| <b>Concentration</b>  | 50 µg/mL as determined by BCA  |
| <b>Storage Buffer</b> | 100 mM glycine, 25 mM Tris-HCl, pH 7.3.  |

## GENE INFORMATION

|                        |   |
|------------------------|---|
| <b>Gene Name</b>       | SERPINB9 serpin family B member 9 [ Homo sapiens (human) ]  |
| <b>Official Symbol</b> | SERPINB9  |
| <b>Synonyms</b>        | SERPINB9; serpin peptidase inhibitor, clade B (ovalbumin), member 9; PI9, serine (or cysteine) proteinase inhibitor, clade B (ovalbumin), member 9; serpin B9; CAP3; peptidase inhibitor 9; cytoplasmic antiproteinase 3; protease inhibitor 9 (ovalbumin type); serpin peptidase inhibitor, clade B, member 9; serine (or cysteine) proteinase inhibitor, clade B (ovalbumin), member 9; PI9; PI-9; CAP-3; |
| <b>Gene ID</b>         | 5272  |
| <b>mRNA Refseq</b>     | NM_004155   |
| <b>Protein Refseq</b>  | NP_004146   |
| <b>MIM</b>             | 601799  |

 Tel: 1-631-559-9269 1-516-512-3133

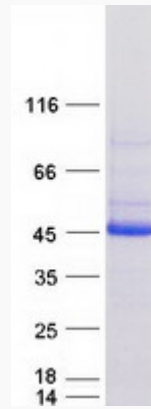
 Email: [info@creative-biomart.com](mailto:info@creative-biomart.com)  Fax: 1-631-938-8127

 45-1 Ramsey Road, Shirley, NY 11967, USA

UniProt ID

P50453

SDS-PAGE



 Tel: 1-631-559-9269 1-516-512-3133

 Email: [info@creative-biomart.com](mailto:info@creative-biomart.com)  Fax: 1-631-938-8127

 45-1 Ramsey Road, Shirley, NY 11967, USA