

Recombinant Human SERPINB9 Protein (Met1-Pro376), N-His tagged

Cat. No. SERPINB9-5917H Lot. No. (See product label)

SPECIFICATION

| | |
|-------------------------|---|
| Product Overview | Recombinant human SERPINB9 (Met1-Pro376) fused with the N-His tag was expressed in E. coli. |
| Species | Human |
| Source | E.coli |
| ProteinLength | Met1-Pro376 |
| Form | Lyophilized powder/frozen liquid |
| Molecular Mass | 44.71 kDa |
| Purity | > 90 % as determined by SDS-PAGE |
| Notes | For research use only. |
| Storage | Use a manual defrost freezer and avoid repeated freeze thaw cycles. Store at 2 to 8 centigrade for one week. Store at -20 to -80 centigrade for twelve months from the date of receipt. |
| Storage Buffer | 0.01M PBS, pH 7.4, 0.02 % NLS |
| Reconstitution | Reconstitute in sterile water for a stock solution. |

 Tel: 1-631-559-9269 1-516-512-3133

 Email: info@creative-biomart.com  Fax: 1-631-938-8127

 45-1 Ramsey Road, Shirley, NY 11967, USA

Shipping

They are shipped out with dry ice/blue ice unless customers require otherwise.

GENE INFORMATION

| | |
|------------------------|---|
| Gene Name | SERPINB9 serpin peptidase inhibitor, clade B (ovalbumin), member 9 [Homo sapiens (human)] |
| Official Symbol | SERPINB9 |
| Synonyms | SERPINB9; serpin peptidase inhibitor, clade B (ovalbumin), member 9; PI9, serine (or cysteine) proteinase inhibitor, clade B (ovalbumin), member 9; serpin B9; CAP3; peptidase inhibitor 9; cytoplasmic antiproteinase 3; protease inhibitor 9 (ovalbumin type); serpin peptidase inhibitor, clade B, member 9; serine (or cysteine) proteinase inhibitor, clade B (ovalbumin), member 9; PI9; PI-9; CAP-3; |
| Gene ID | 5272 |
| mRNA Refseq | NM_004155 |
| Protein Refseq | NP_004146 |
| MIM | 601799 |
| UniProt ID | P50453 |

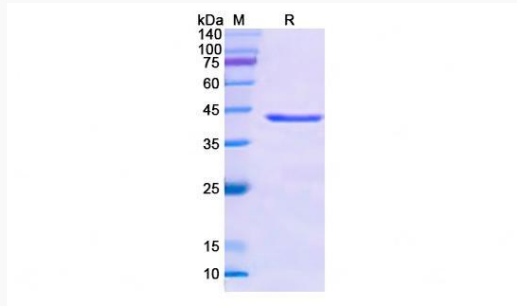
 Tel: 1-631-559-9269 1-516-512-3133

 Email: info@creative-biomart.com  Fax: 1-631-938-8127

 45-1 Ramsey Road, Shirley, NY 11967, USA



SDS-PAGE



Tel: 1-631-559-9269 1-516-512-3133

Email: info@creative-biomart.com Fax: 1-631-938-8127

45-1 Ramsey Road, Shirley, NY 11967, USA