

Recombinant Human SERPINC1 Protein, His-tagged

Cat. No. SERPINC1-001H Lot. No. (See product label)

SPECIFICATION

Product Overview	Recombinant human SERPINC1 (33-464aa), fused to His-tag at C-terminus, was expressed in insect cell and purified by using conventional chromatography techniques.
Species	Human
Source	Insect Cells
ProteinLength	33-464 a.a.
Description	SERPINC1, also known as antithrombin-III, is a member of the Serpin superfamily of the serine protease inhibitors. It is the principal plasma Serpin of blood clotting proteases and inhibits thrombin as well as several factors such as Xa. It is one of the most important coagulation inhibitors and is the basic enzyme for the therapeutic action of heparin. In common with SerpinA5 and D1, the inhibitory activity of SerpinC1 dramatically increases the presence of heparin and other glycosaminoglycans. It mediates the promotion of prostaglandin release, inhibitors of leukocyte activation and down-regulation of many inflammatory cytokines. This protein has anti-inflammatory properties besides anticoagulant.
Form	Liquid
Molecular Mass	50.1 kDa
N-terminal Sequence	Ala

 Tel: 1-631-559-9269 1-516-512-3133

 Email: info@creative-biomart.com  Fax: 1-631-938-8127

 45-1 Ramsey Road, Shirley, NY 11967, USA

Analysis	
Endotoxin	< 1.0 EU per 1 µg of protein (determined by LAL method)
Purity	> 90% by SDS - PAGE
Storage	Can be stored at +4 centigrade short term (1-2 weeks). For long term storage, aliquot and store at -20 centigrade or -70 centigrade. Avoid repeated freezing and thawing cycles.
Concentration	0.5 mg/mL (determined by Absorbance at 280nm)
Storage Buffer	In Phosphate Buffered Saline (pH 7.4) containing 10% glycerol.
Warning	For research use only. This product is not intended or approved for human, diagnostics or veterin
AA Sequence	ADPHGSPVDICTAKPRDIPMNPNCIYRSPEKKATEDEGSEQKIPEATNRRVWELSKA NSRFATTFYQHLADSKNDNDNIFLSPLSISTAFAMTKLGACNDTLQQLMEVFKFDTIS EKTSQIHFFFALNCRLYRKANKSSKLVSANRLF GDKSLTFNETYQDISELVYGAKL QPLDFKENAEQSRAAINKWVSNKTEGRITDVIPSEAINELTVLVLVNTIYFKGLWKS KF SPENTRKELFYKADGESCSASMMYQEGKFRYRRVAEGTQVLELPFKGDDITMVLILP KPEKSLAKVEKELTPEVLQEWLDELEEMMLVVHMPRFRIEDGFSLKEQLQDMGLVD LFSPEKSKLPGIVAEGRDDLYVSDAFHKAFLEVNEEGSEAAASTAVVIAGRSLNPNR VTFKANRPFLVFIREVPLNTIIFMGRVANPCVKHHHHHH

GENE INFORMATION

Gene Name	SERPINC1 serpin family C member 1 [Homo sapiens (human)]
Official Symbol	SERPINC1

Synonyms SERPINC1; serpin family C member 1; AT3; AT3D; ATIII; THPH7; ATIII-R2; antithrombin-III; antithrombin III isoform; serine (or cysteine) proteinase inhibitor, clade C (antithrombin), member 1; serpin peptidase inhibitor clade C member 1; serpin peptidase inhibitor, clade C (antithrombin), member 1

Gene ID 462

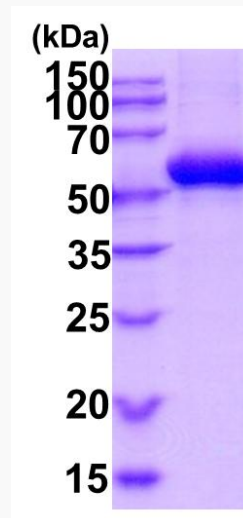
mRNA Refseq NM_000488

Protein Refseq NP_000479

MIM 107300

UniProt ID P01008

SDS-PAGE



15% SDS-PAGE (3 µg)

 Tel: 1-631-559-9269 1-516-512-3133

 Email: info@creative-biomart.com  Fax: 1-631-938-8127

 45-1 Ramsey Road, Shirley, NY 11967, USA