

Active Recombinant Human SERPINC1 protein, His-tagged

Cat. No. SERPINC1-2665H Lot. No. (See product label)

SPECIFICATION

Product Overview	Recombinant Human SerpinC1/AntithrombinIII/ATIII Protein is produced by HEK293 expression system. The target protein is expressed with sequence (His33-Lys464) of human SerpinC1/AntithrombinIII/ATIII (Accession #NP_000479.1) fused with a 6xHis tag at the C-terminus.
Species	Human
Source	HEK293
ProteinLength	His33-Lys464
Form	Lyophilized from a 0.22 µm filtered solution of PBS, pH 7.4.
Bio-activity	Measured by its ability to inhibit Recombinant Human Coagulation Factor II/Thrombin cleavage of a fluorogenic peptide substrate Boc-VPR-AMC. The IC50 value is <0.48 nM.
Molecular Mass	55-65 kDa
Endotoxin	< 0.1 EU/µg of the protein by LAL method.
Purity	> 95% by SDS-PAGE.
Storage	Store the lyophilized protein at -20°C to -80 °C for long term. After reconstitution, the protein solution is stable at -20 °C for 3 months, at 2-8 °C for

 Tel: 1-631-559-9269 1-516-512-3133

 Email: info@creative-biomart.com  Fax: 1-631-938-8127

 45-1 Ramsey Road, Shirley, NY 11967, USA

up to 1 week.

Reconstitution Reconstitute to a concentration of 0.1-0.5 mg/mL in sterile distilled water.

GENE INFORMATION

Gene Name [SERPINC1 serpin peptidase inhibitor, clade C \(antithrombin\), member 1 \[Homo sapiens \]](#)

Official Symbol [SERPINC1](#)

Synonyms SERPINC1; serpin peptidase inhibitor, clade C (antithrombin), member 1; AT3, serine (or cysteine) proteinase inhibitor, clade C (antithrombin), member 1; antithrombin-III; antithrombin (aa 375 432); antithrombin III; ATIII; coding sequence signal peptide antithrombin part 1; MGC22579; signal peptide antithrombin part 1; serpin C1; serine-cysteine proteinase inhibitor clade C member 1; serine (or cysteine) proteinase inhibitor, clade C (antithrombin), member 1; AT3; AT3D; THPH7;

Gene ID [462](#)

mRNA Refseq [NM_000488](#)

Protein Refseq [NP_000479](#)

MIM [107300](#)

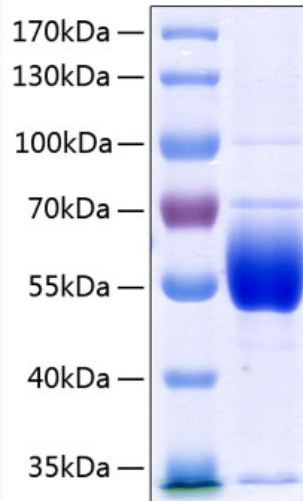
UniProt ID [P01008](#)

 Tel: 1-631-559-9269 1-516-512-3133

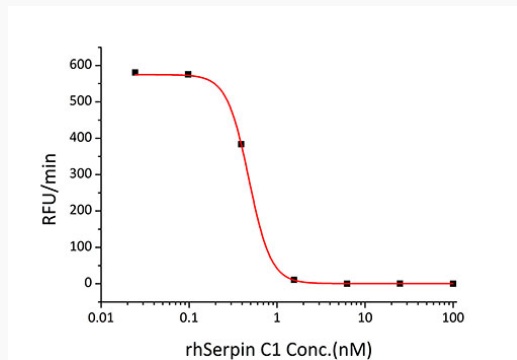
 Email: info@creative-biomart.com  Fax: 1-631-938-8127

 45-1 Ramsey Road, Shirley, NY 11967, USA

SDS-PAGE



Bio-activity



 Tel: 1-631-559-9269 1-516-512-3133

 Email: info@creative-biomart.com  Fax: 1-631-938-8127

 45-1 Ramsey Road, Shirley, NY 11967, USA