

Recombinant Human SERPINC1 protein, His-tagged

Cat. No. SERPINC1-5923H Lot. No. (See product label)

SPECIFICATION

Product Overview	Recombinant Human SERPINC1 protein(P01008)(1-464aa(R294L)), fused to N-terminal His tag, was expressed in HEK293.
Species	Human
Source	HEK293
ProteinLength	1-464aa(R294L)
Form	If the delivery form is liquid, the default storage buffer is Tris/PBS-based buffer, 5%-50% glycerol. If the delivery form is lyophilized powder, the buffer before lyophilization is Tris/PBS-based buffer, 6% Trehalose, pH 8.0.
Molecular Mass	54.8 kDa
Purity	Greater than 85% as determined by SDS-PAGE.
Storage	Store at -20°C/-223°C upon receipt, aliquoting is necessary for mutiple use. Avoid repeated freeze-thaw cycles.
Reconstitution	Please reconstitute protein in deionized sterile water to a concentration of 0.1-1.0 mg/mL. We recommend to add 5-50% of glycerol (final concentration) and aliquot for long-term storage at -20°C/-80°C. Our default final concentration of glycerol is 193%.

GENE INFORMATION

 Tel: 1-631-559-9269 1-516-512-3133

 Email: info@creative-biomart.com  Fax: 1-631-938-8127

 45-1 Ramsey Road, Shirley, NY 11967, USA

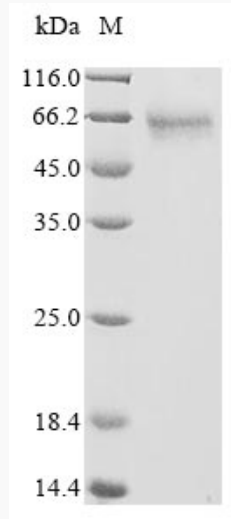
Gene Name	SERPINC1 serpin peptidase inhibitor, clade C (antithrombin), member 1 [Homo sapiens]
Official Symbol	SERPINC1
Synonyms	SERPINC1; serpin peptidase inhibitor, clade C (antithrombin), member 1; AT3, serine (or cysteine) proteinase inhibitor, clade C (antithrombin), member 1; antithrombin-III; antithrombin (aa 375 432); antithrombin III; ATIII; coding sequence signal peptide antithrombin part 1; MGC22579; signal peptide antithrombin part 1; serpin C1; serine-cysteine proteinase inhibitor clade C member 1; serine (or cysteine) proteinase inhibitor, clade C (antithrombin), member 1; AT3; AT3D; THPH7;
Gene ID	462
mRNA Refseq	NM_000488
Protein Refseq	NP_000479
MIM	107300
UniProt ID	P01008

 Tel: 1-631-559-9269 1-516-512-3133

 Email: info@creative-biomart.com  Fax: 1-631-938-8127

 45-1 Ramsey Road, Shirley, NY 11967, USA

SDS-PAGE



 Tel: 1-631-559-9269 1-516-512-3133

 Email: info@creative-biomart.com  Fax: 1-631-938-8127

 45-1 Ramsey Road, Shirley, NY 11967, USA