

## Recombinant Human SERPINC1 protein, hFc-tagged

Cat. No. SERPINC1-5934H Lot. No. (See product label)

### SPECIFICATION

<b>Product Overview</b>	Recombinant Human SERPINC1 protein(P01008)(1-464aa(R294H)), fused to C-terminal hFc tag, was expressed in HEK293.
<b>Species</b>	Human
<b>Source</b>	HEK293
<b>ProteinLength</b>	1-464aa(R294H)
<b>Form</b>	If the delivery form is liquid, the default storage buffer is Tris/PBS-based buffer, 5%-50% glycerol. If the delivery form is lyophilized powder, the buffer before lyophilization is Tris/PBS-based buffer, 6% Trehalose, pH 8.0.
<b>Molecular Mass</b>	81.5 kDa
<b>Purity</b>	Greater than 85% as determined by SDS-PAGE.
<b>Storage</b>	Store at -20°C/-234°C upon receipt, aliquoting is necessary for mutiple use. Avoid repeated freeze-thaw cycles.
<b>Reconstitution</b>	Please reconstitute protein in deionized sterile water to a concentration of 0.1-1.0 mg/mL. We recommend to add 5-50% of glycerol (final concentration) and aliquot for long-term storage at -20°C/-80°C. Our default final concentration of glycerol is 204%.

### GENE INFORMATION

 Tel: 1-631-559-9269 1-516-512-3133

 Email: [info@creative-biomart.com](mailto:info@creative-biomart.com)  Fax: 1-631-938-8127

 45-1 Ramsey Road, Shirley, NY 11967, USA

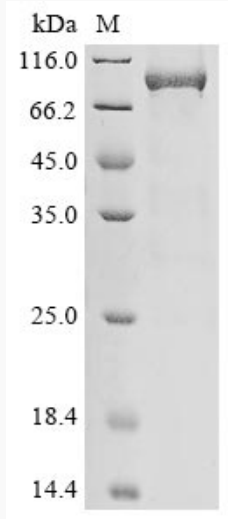
<b>Gene Name</b>	SERPINC1 serpin peptidase inhibitor, clade C (antithrombin), member 1 [ Homo sapiens ]
<b>Official Symbol</b>	SERPINC1
<b>Synonyms</b>	SERPINC1; serpin peptidase inhibitor, clade C (antithrombin), member 1; AT3, serine (or cysteine) proteinase inhibitor, clade C (antithrombin), member 1; antithrombin-III; antithrombin (aa 375 432); antithrombin III; ATIII; coding sequence signal peptide antithrombin part 1; MGC22579; signal peptide antithrombin part 1; serpin C1; serine-cysteine proteinase inhibitor clade C member 1; serine (or cysteine) proteinase inhibitor, clade C (antithrombin), member 1; AT3; AT3D; THPH7;
<b>Gene ID</b>	462
<b>mRNA Refseq</b>	NM_000488
<b>Protein Refseq</b>	NP_000479
<b>MIM</b>	107300
<b>UniProt ID</b>	P01008

 Tel: 1-631-559-9269 1-516-512-3133

 Email: [info@creative-biomart.com](mailto:info@creative-biomart.com)  Fax: 1-631-938-8127

 45-1 Ramsey Road, Shirley, NY 11967, USA

**SDS-PAGE**



 Tel: 1-631-559-9269 1-516-512-3133

 Email: [info@creative-biomart.com](mailto:info@creative-biomart.com)  Fax: 1-631-938-8127

 45-1 Ramsey Road, Shirley, NY 11967, USA