

Active Recombinant Full Length Human SERPINC1, His tagged

Cat. No. SERPINC1-856H Lot. No. (See product label)

SPECIFICATION

Product Overview	Active Recombinant Full Length Human SERPINC1(NP_000479.1) (Met 1-Lys 464) was expressed in Human Cells with a C-terminal polyhistidine tag.
Species	Human
Source	Human Cells
ProteinLength	1-464 aa
Form	Lyophilized from sterile PBS, pH 7.4.
Bio-activity	Measured by its ability to inhibit thrombin cleavage of a fluorogenic peptide substrate Boc-VPR-AMC. The IC50 value is < 5 nM.
Molecular Mass	The recombinant human SerpinC1 consists of 443 amino acids and has a predicted molecular mass of 50.5 kDa. In SDS-PAGE, the apparent molecular mass of rhSerpinC1 is approximately 55-60 kDa due to glycosylation.
Endotoxin	< 1.0 EU per µg of the protein as determined by the LAL method.
Purity	> 95 % as determined by SDS-PAGE
Storage	Store it under sterile conditions at -20°C to -80°C upon receiving. Recommend to aliquot the protein into smaller quantities for optimal storage. Avoid repeated freeze-thaw cycles.

 Tel: 1-631-559-9269 1-516-512-3133

 Email: info@creative-biomart.com  Fax: 1-631-938-8127

 45-1 Ramsey Road, Shirley, NY 11967, USA

Reconstitution It is recommended that sterile water be added to the vial to prepare a stock solution of 0.2 ug/ul. Centrifuge the vial at 4°C before opening to recover the entire contents.

GENE INFORMATION

Gene Name SERPINC1 serpin peptidase inhibitor, clade C (antithrombin), member 1 [Homo sapiens]

Official Symbol SERPINC1

Synonyms SERPINC1; serpin peptidase inhibitor, clade C (antithrombin), member 1; AT3, serine (or cysteine) proteinase inhibitor, clade C (antithrombin), member 1; antithrombin-III; antithrombin (aa 375 432); antithrombin III; ATIII; coding sequence signal peptide antithrombin part 1; MGC22579; signal peptide antithrombin part 1; serpin C1; serine-cysteine proteinase inhibitor clade C member 1; serine (or cysteine) proteinase inhibitor, clade C (antithrombin), member 1; AT3; AT3D; THPH7;

Gene ID 462

mRNA Refseq NM_000488

Protein Refseq NP_000479

MIM 107300

UniProt ID P01008

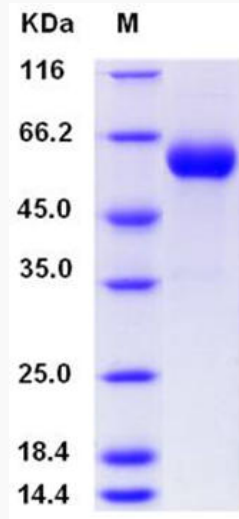
 Tel: 1-631-559-9269 1-516-512-3133

 Email: info@creative-biomart.com  Fax: 1-631-938-8127

 45-1 Ramsey Road, Shirley, NY 11967, USA



SDS-PAGE



Tel: 1-631-559-9269 1-516-512-3133

Email: info@creative-biomart.com Fax: 1-631-938-8127

45-1 Ramsey Road, Shirley, NY 11967, USA